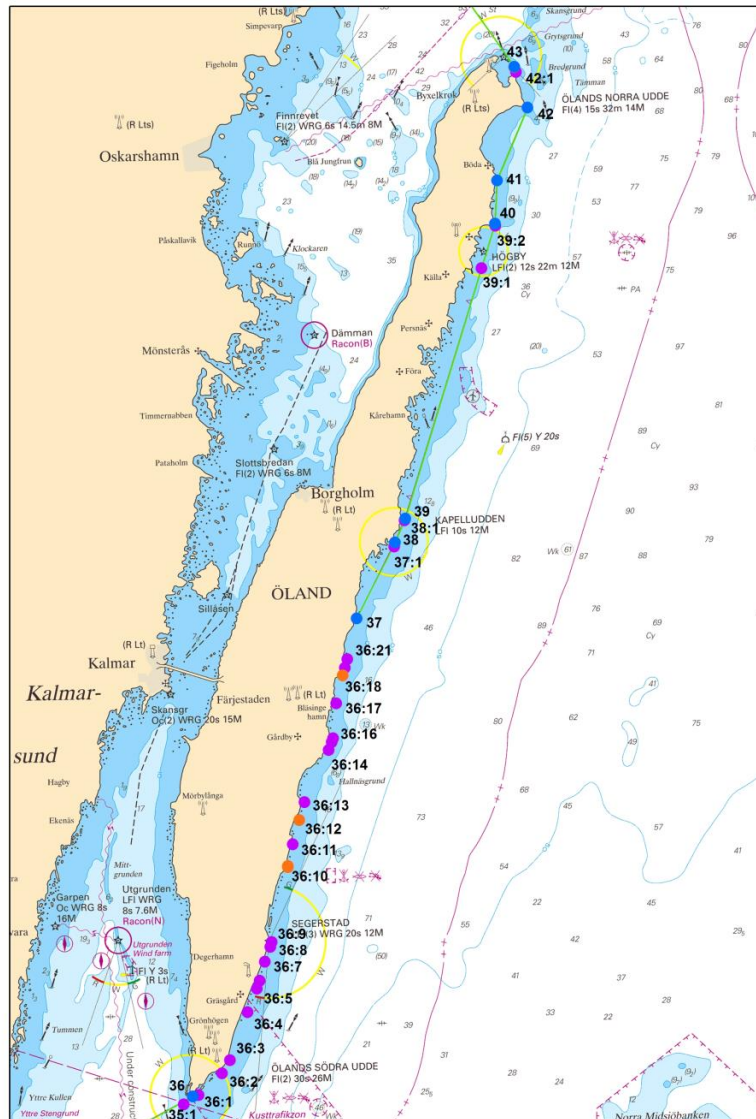


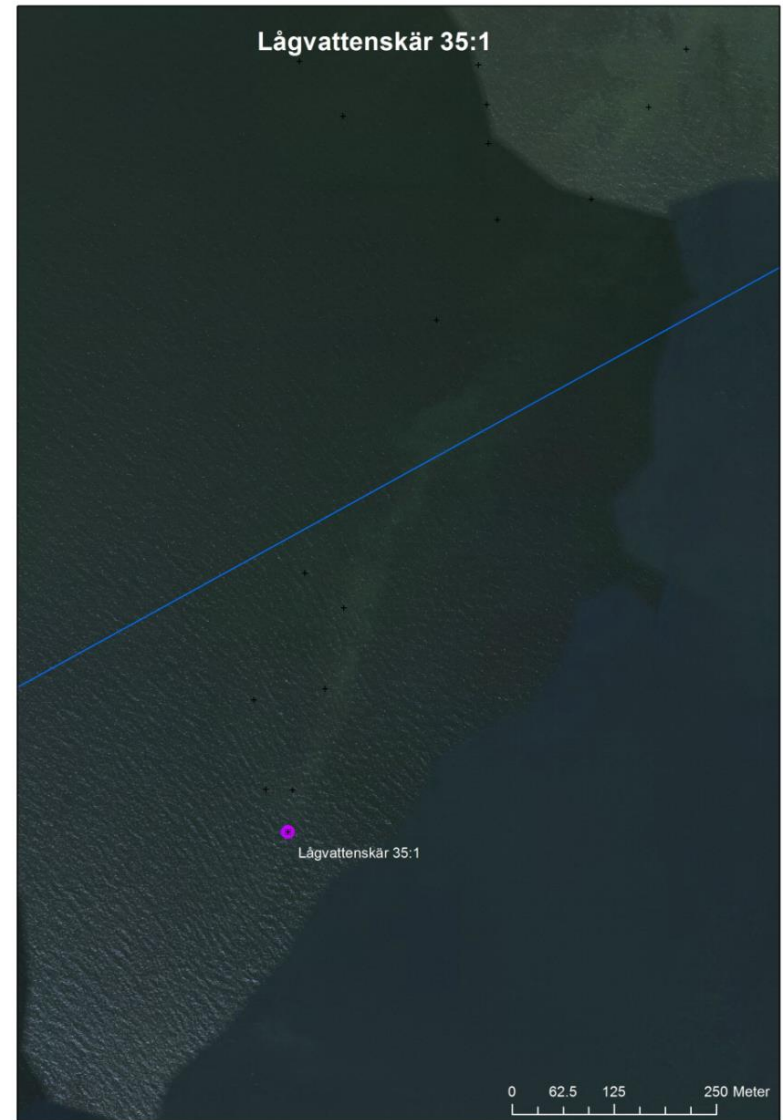
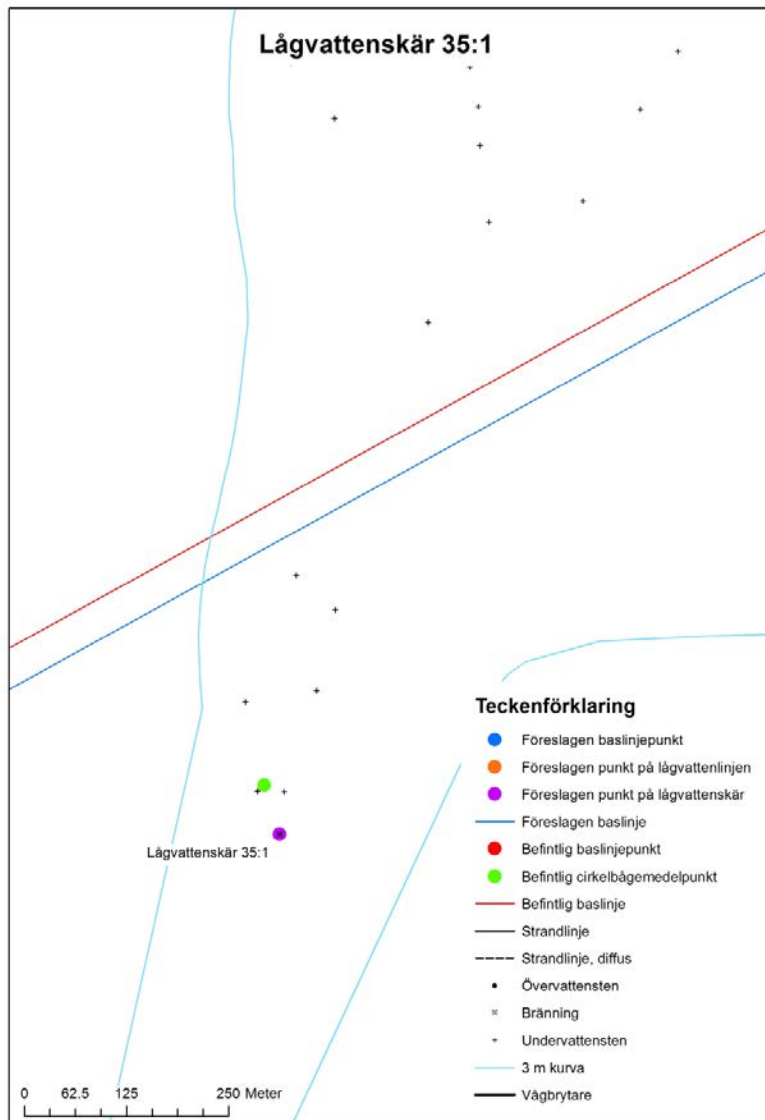
Kartskisser över baslinjepunkter, punkter på lågvattenlinjen och punkter på lågvattenskår samt baslinjer

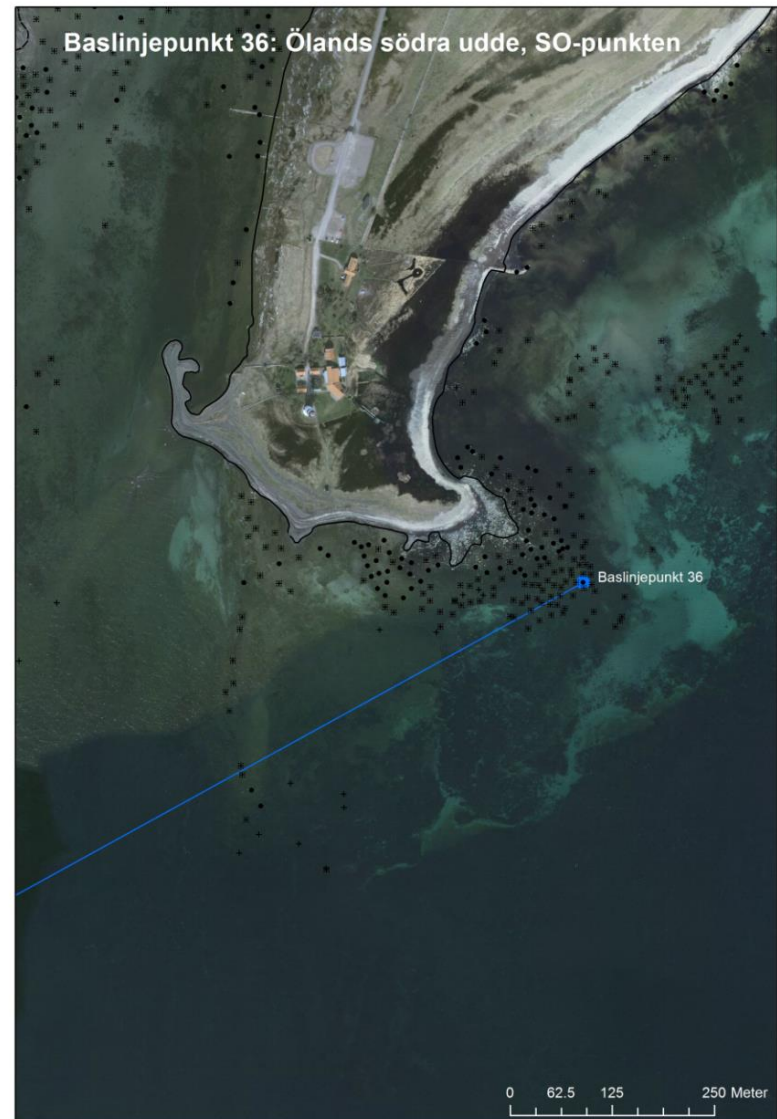
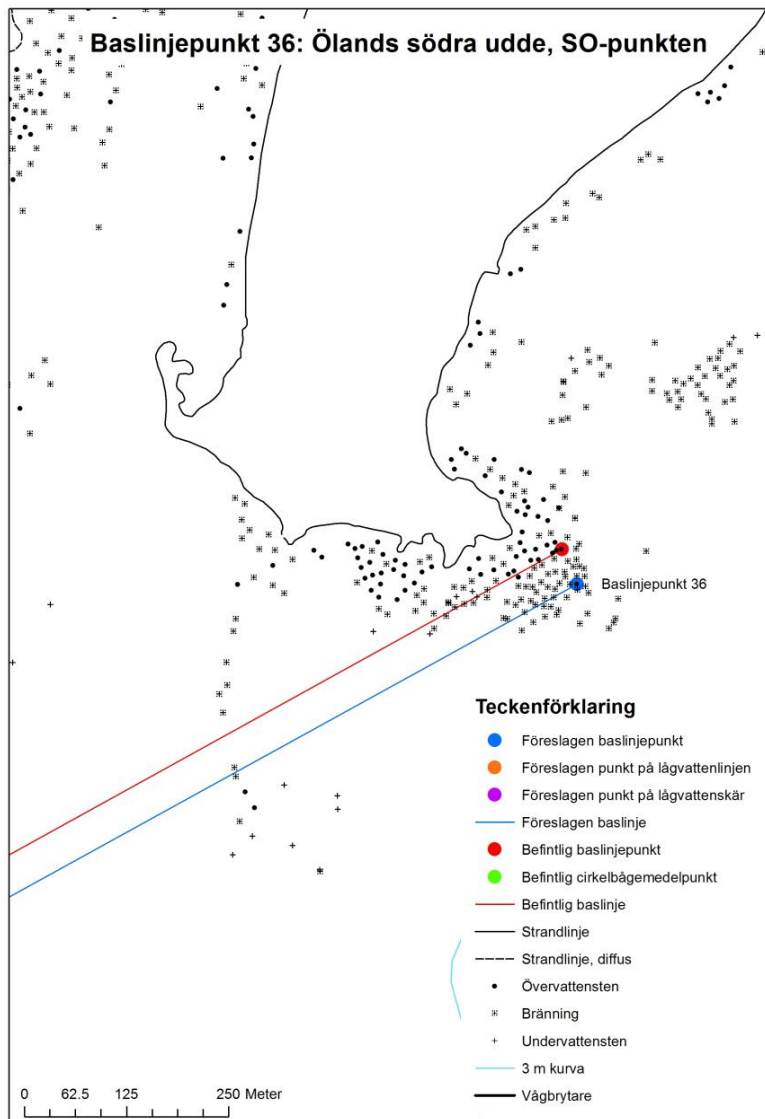
Öland

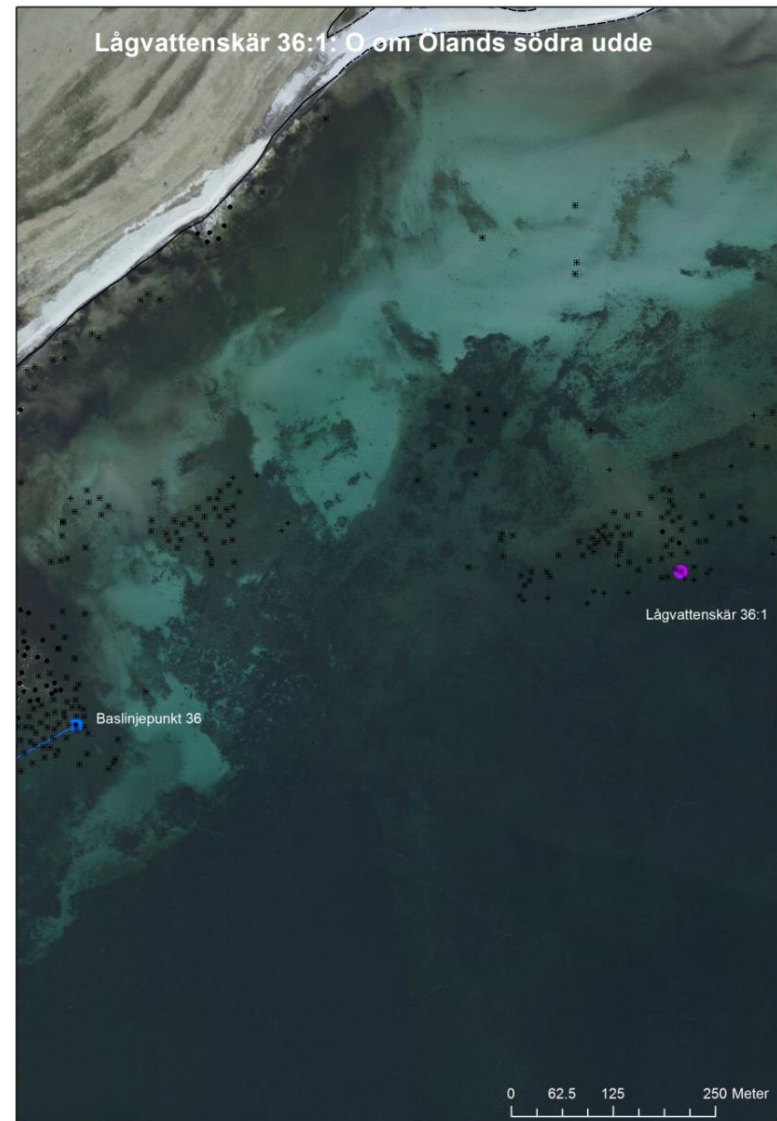
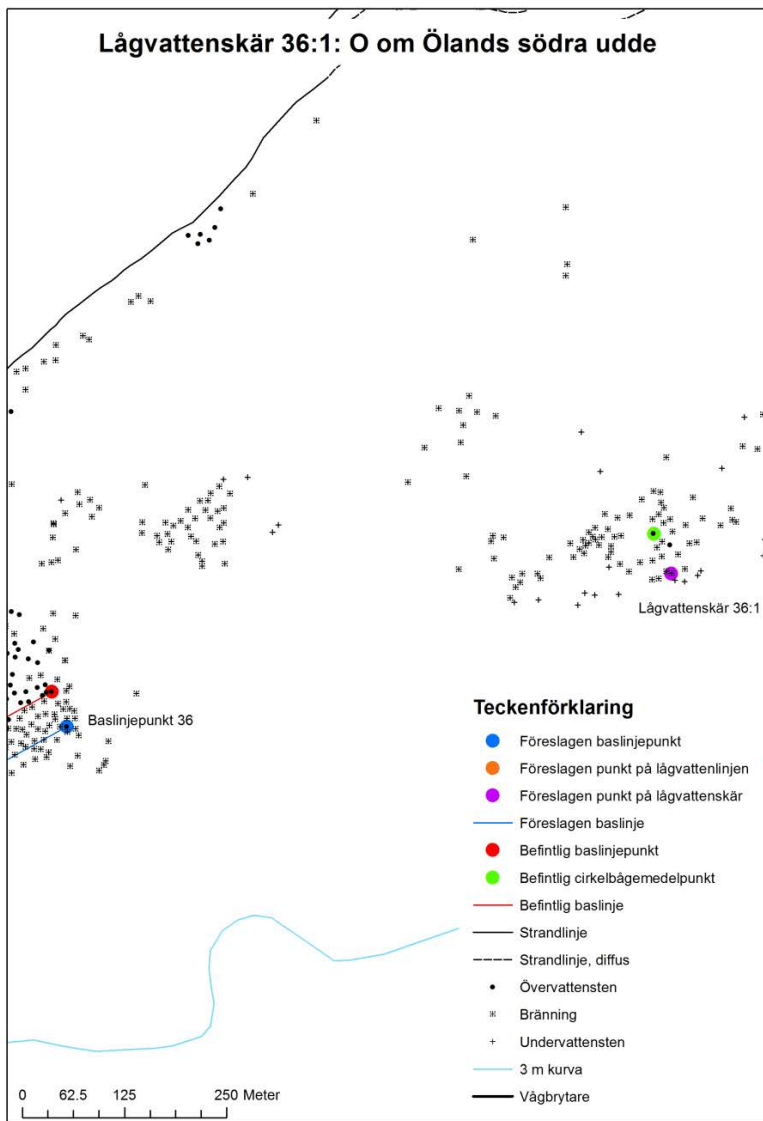
I denna bilaga redovisas kartskisser och ortofoton över utredningens förslag till baslinjepunkter, punkter på lågvattenlinjen, punkter på lågvattenskår och baslinjer. Som jämförelse anges också befintliga baslinjepunkter, cirkelbågemedelpunkter och baslinjer från Sjöfartsverkets sjökortsdatabas.

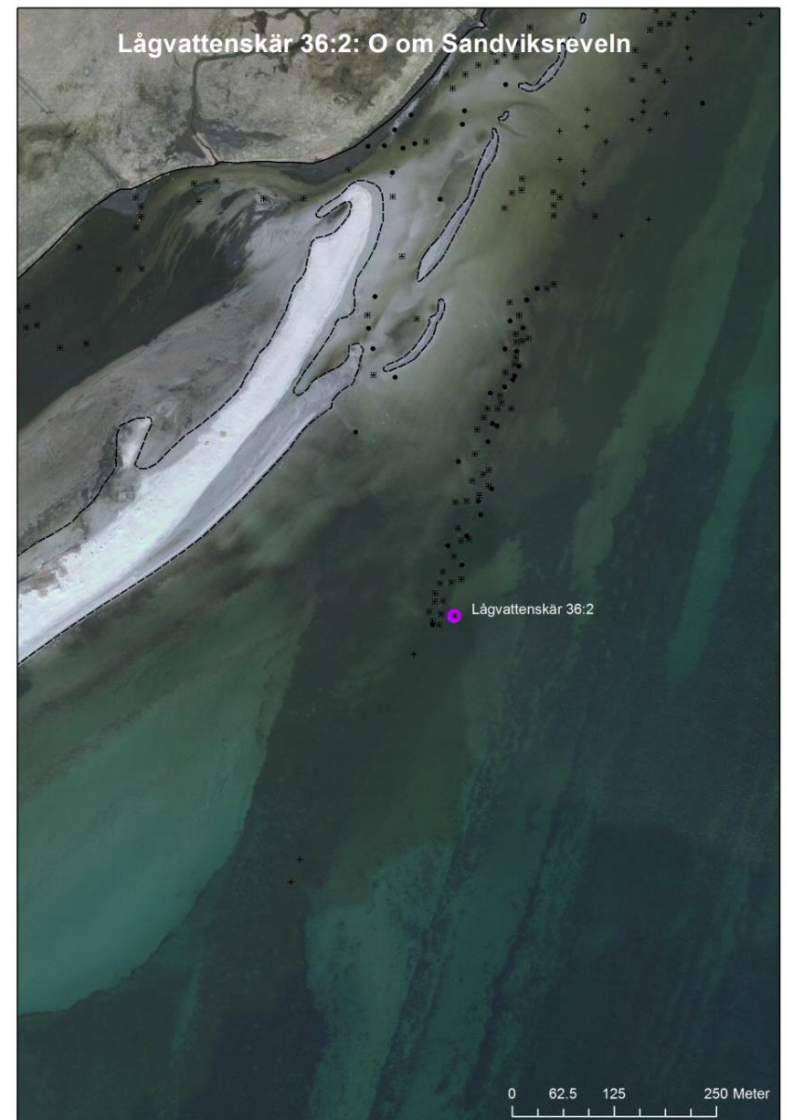
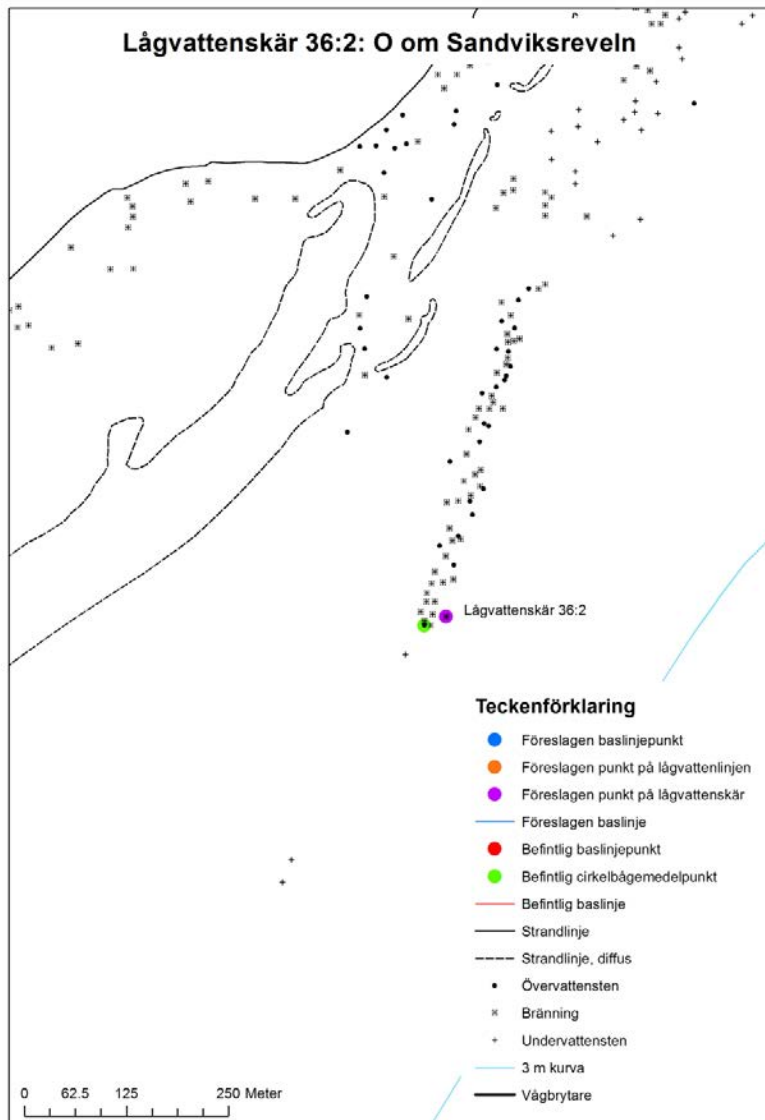
Samtliga kartskisser har skalangivelse och teckenförklaring. Inledningsvis visas en översiktskarta för varje delsträcka av kusten.

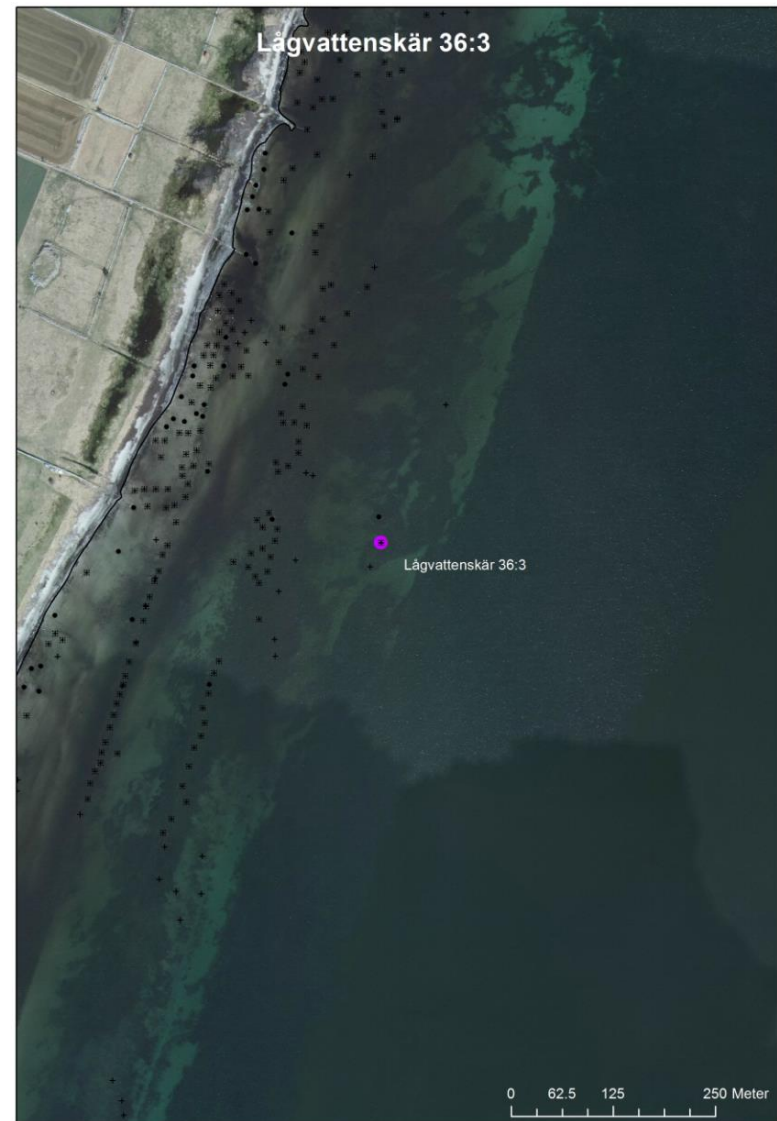
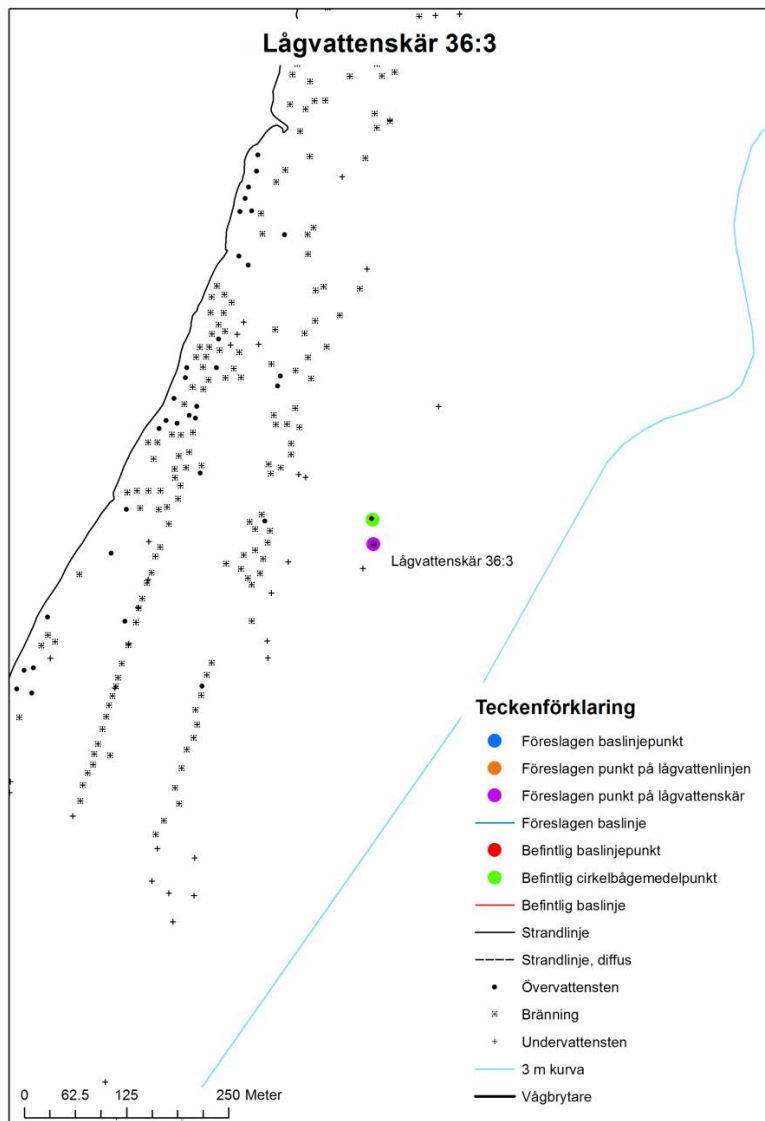


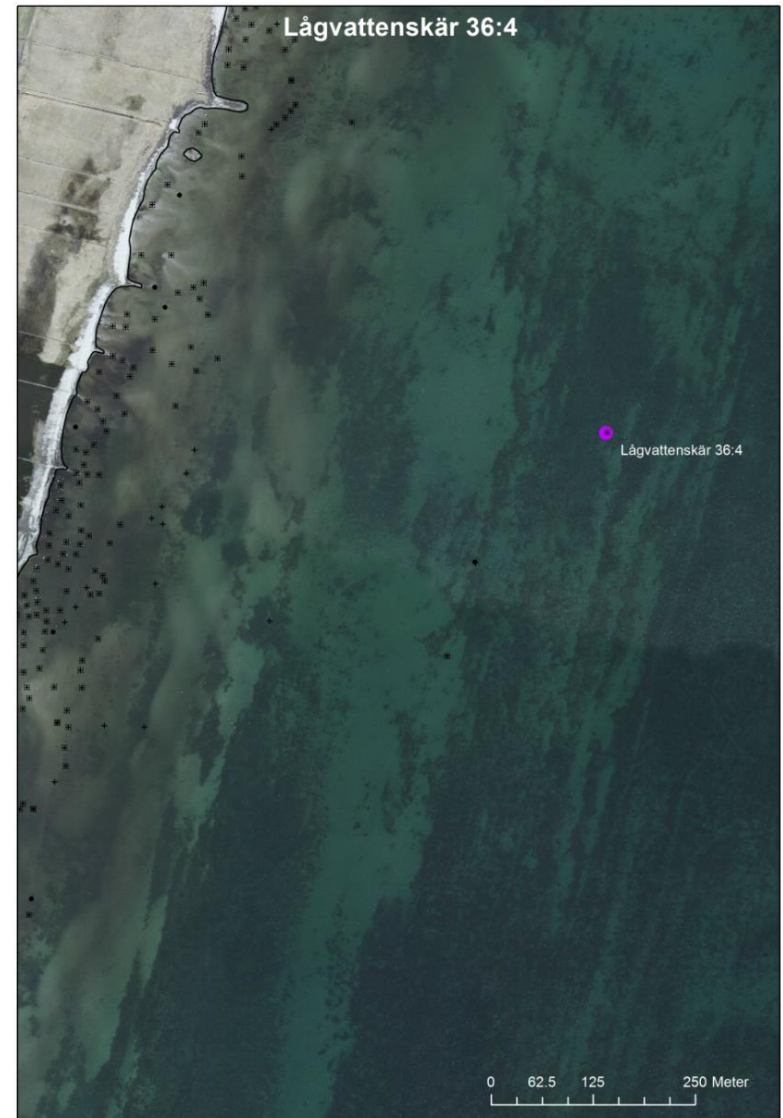
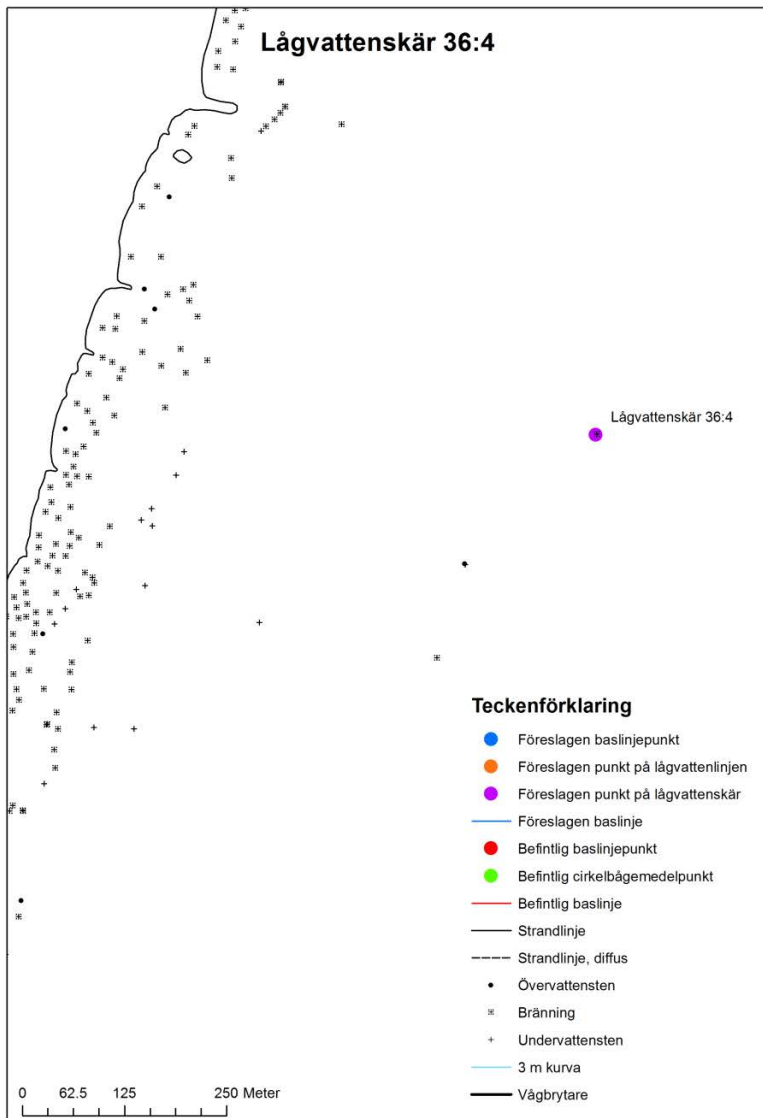


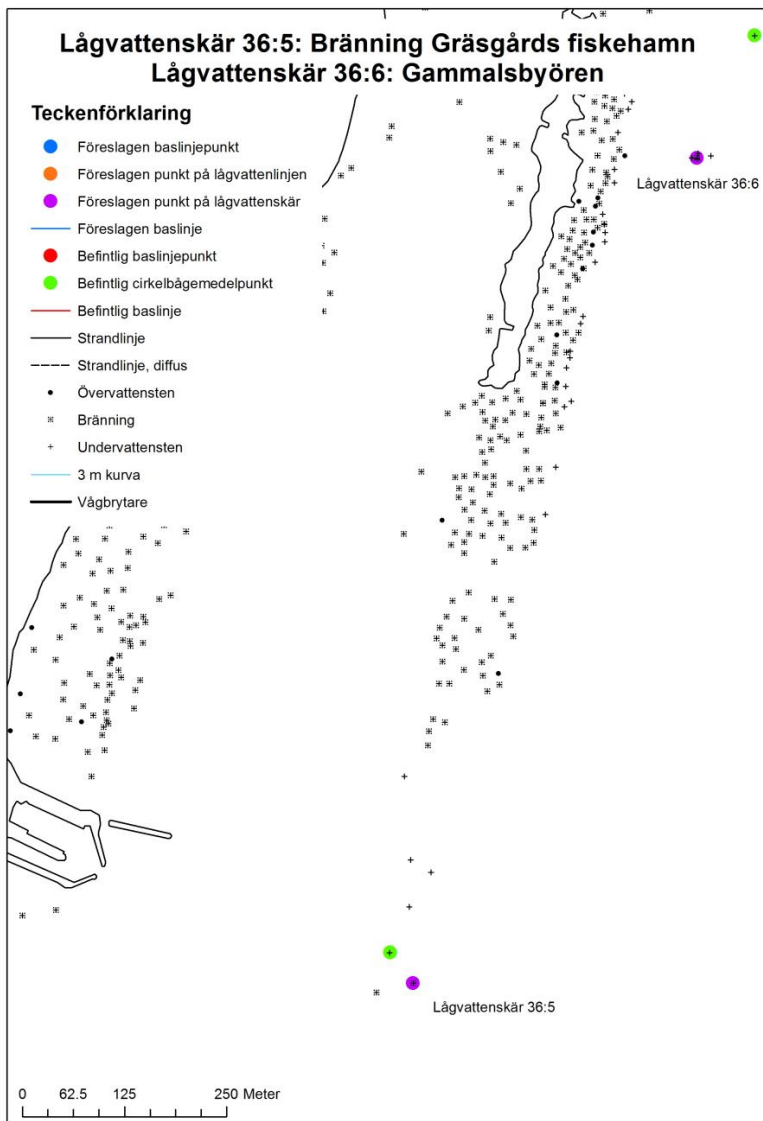


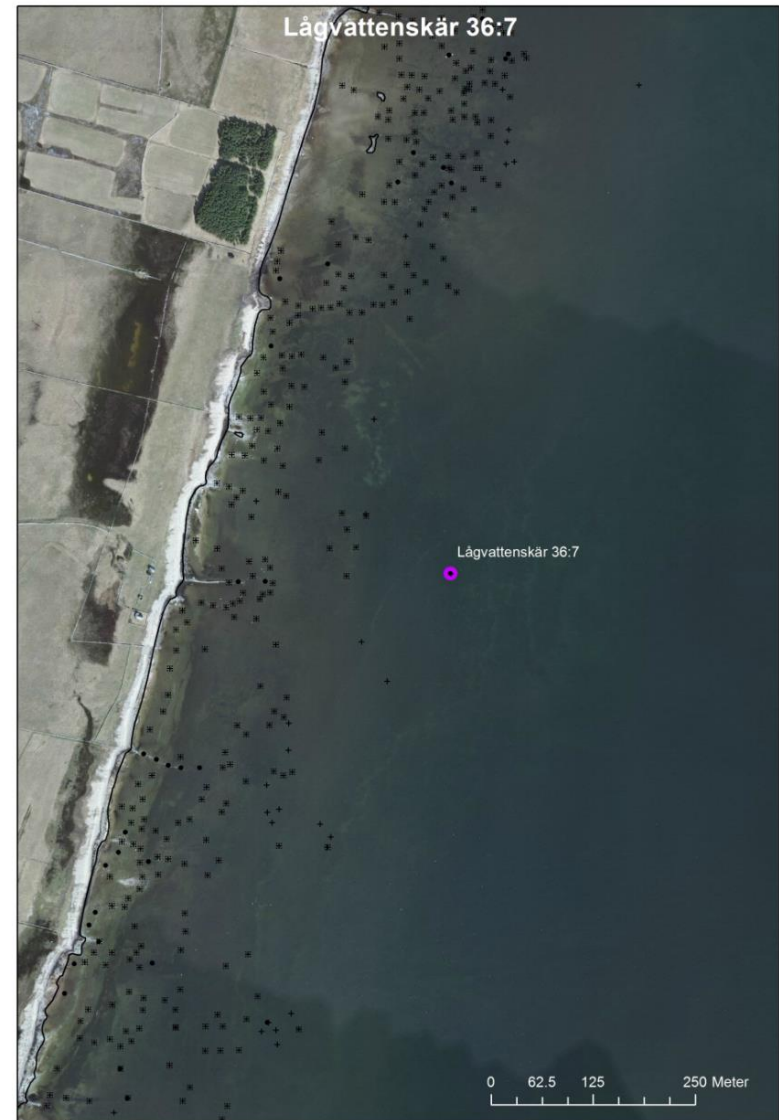
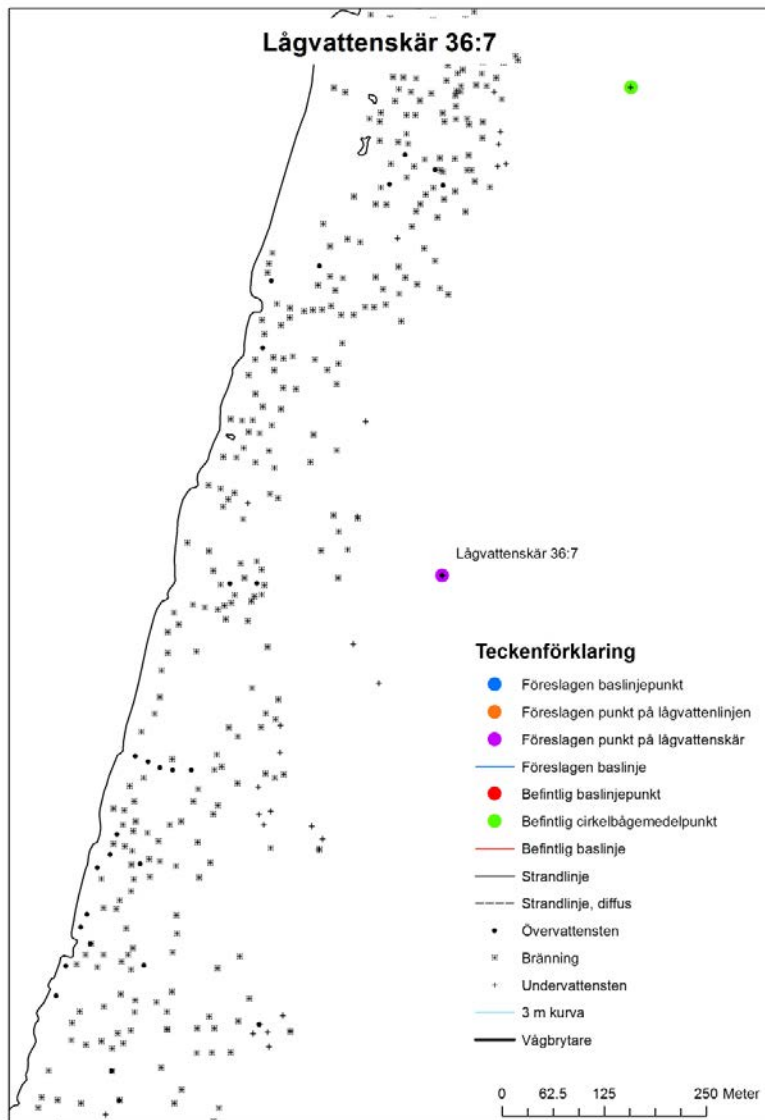


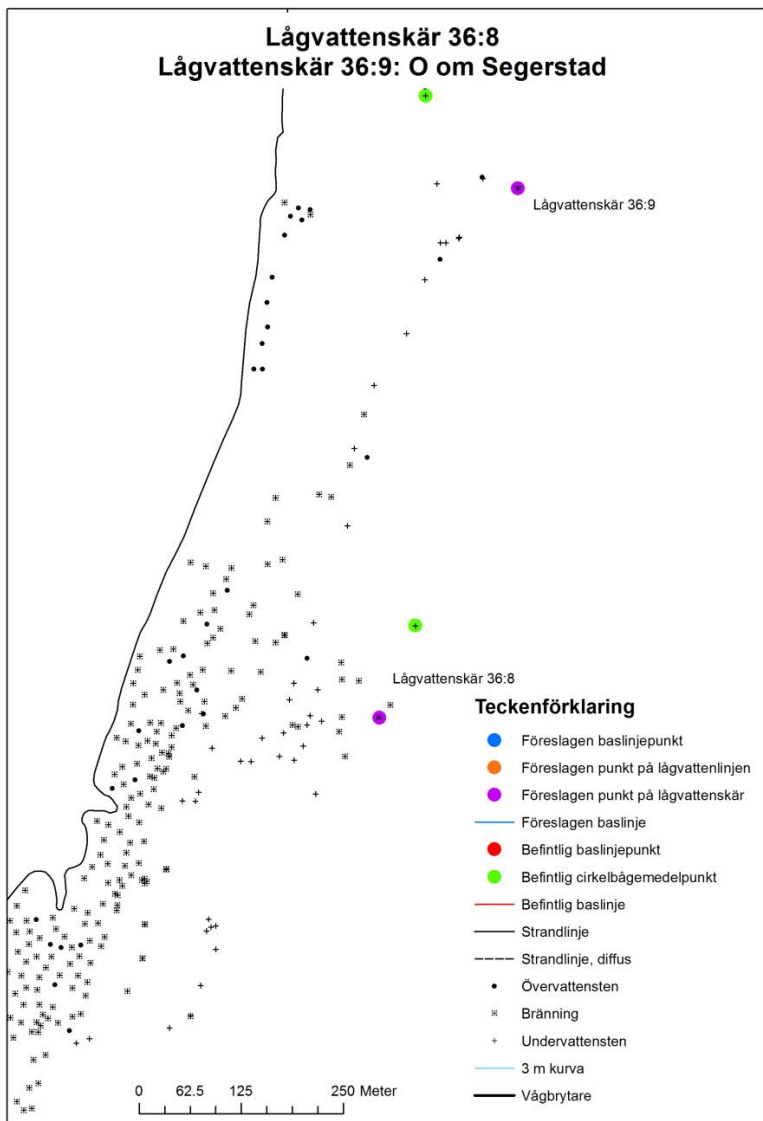








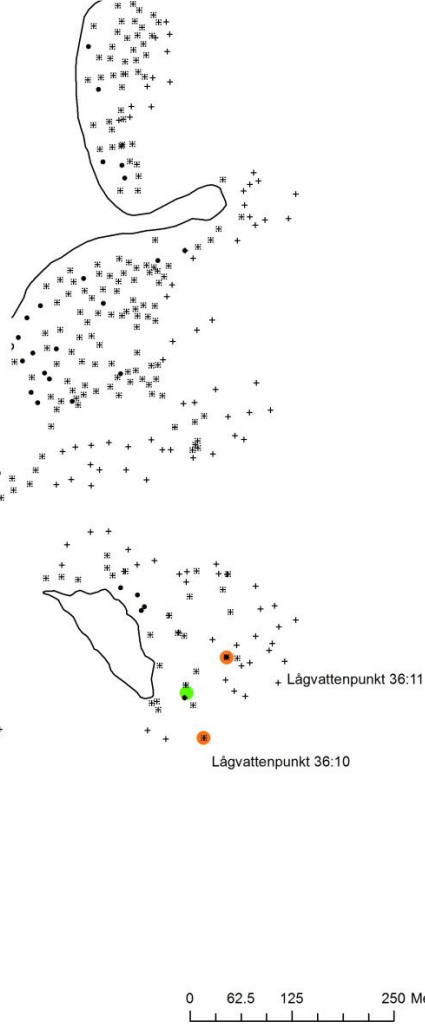




Lågvattpunkt 36:10: Södra Ören, S-punkten Lågvattpunkt 36:11: Södra Ören, O-punkten

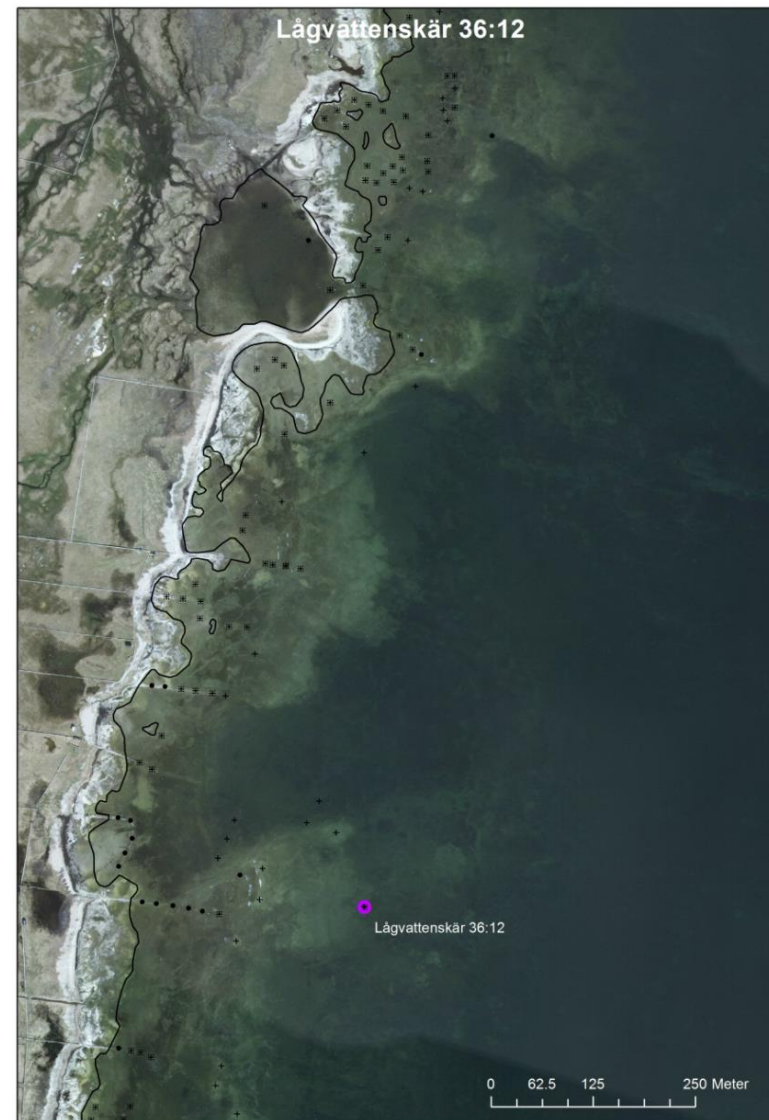
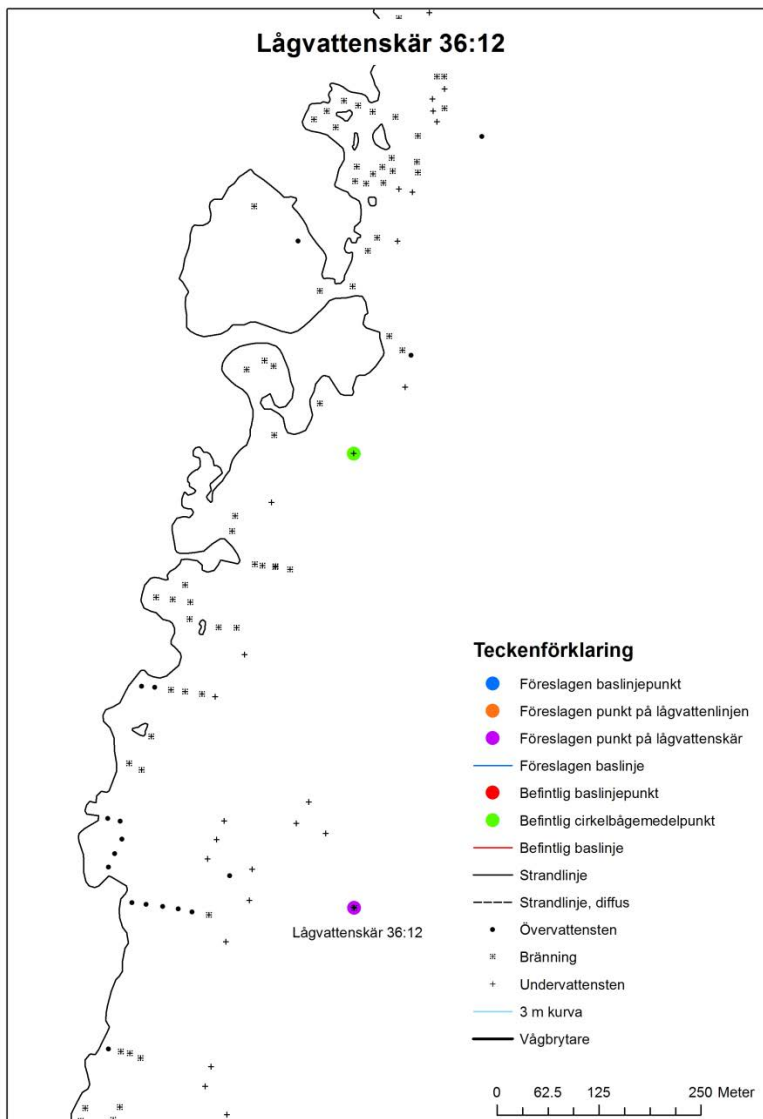
Teckenförklaring

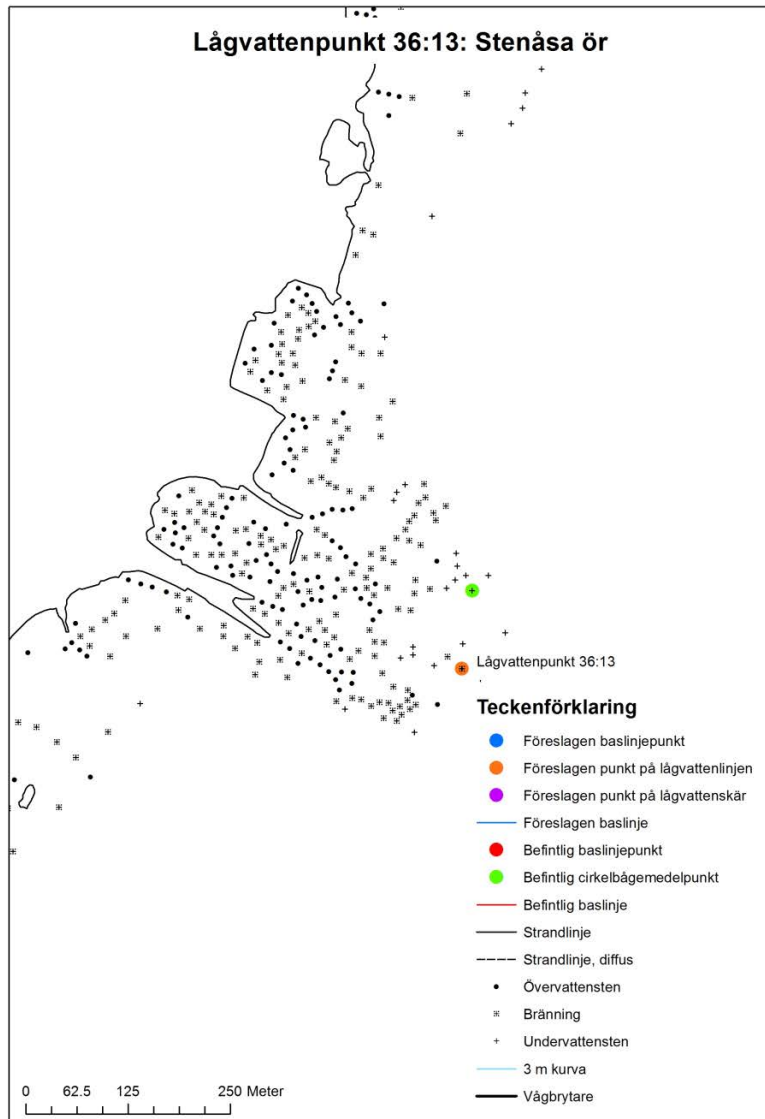
- Föreslagen baslinjepunkt
- Föreslagen punkt på lågvattenlinjen
- Föreslagen punkt på lågvattenskar
- Föreslagen baslinje
- Befintlig baslinjepunkt
- Befintlig cirkelbågemedelpunkt
- Befintlig baslinje
- Strandlinje
- - - - Strandlinje, diffus
- Övervattensten
- ⊠ Bränning
- + Undervattensten
- 3 m kurva
- Vågbrytare



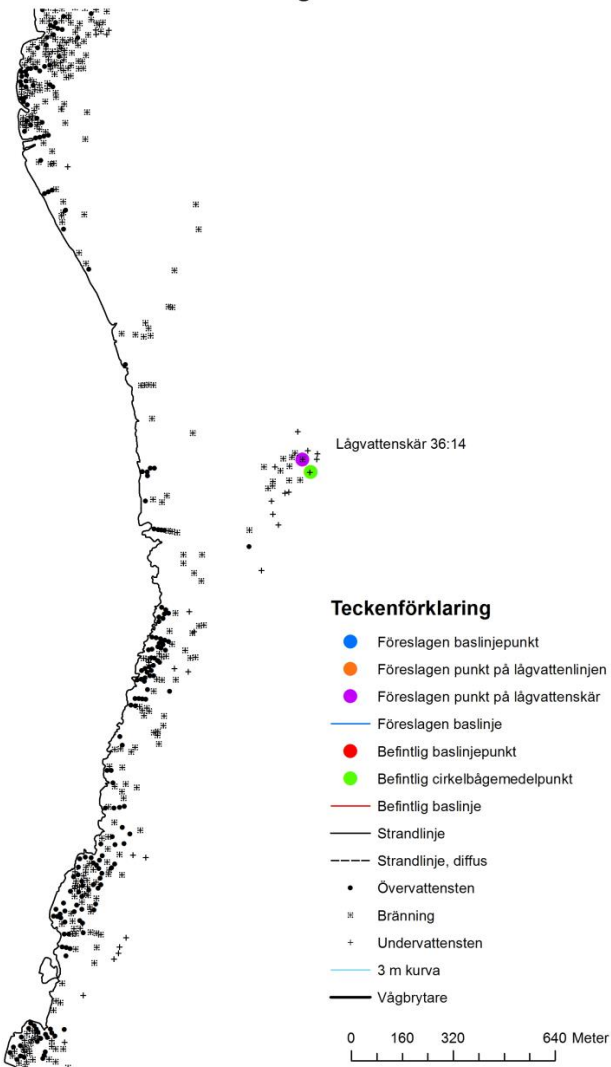
Lågvattpunkt 36:10: Södra Ören, S-punkten Lågvattpunkt 36:11: Södra Ören, O-punkten



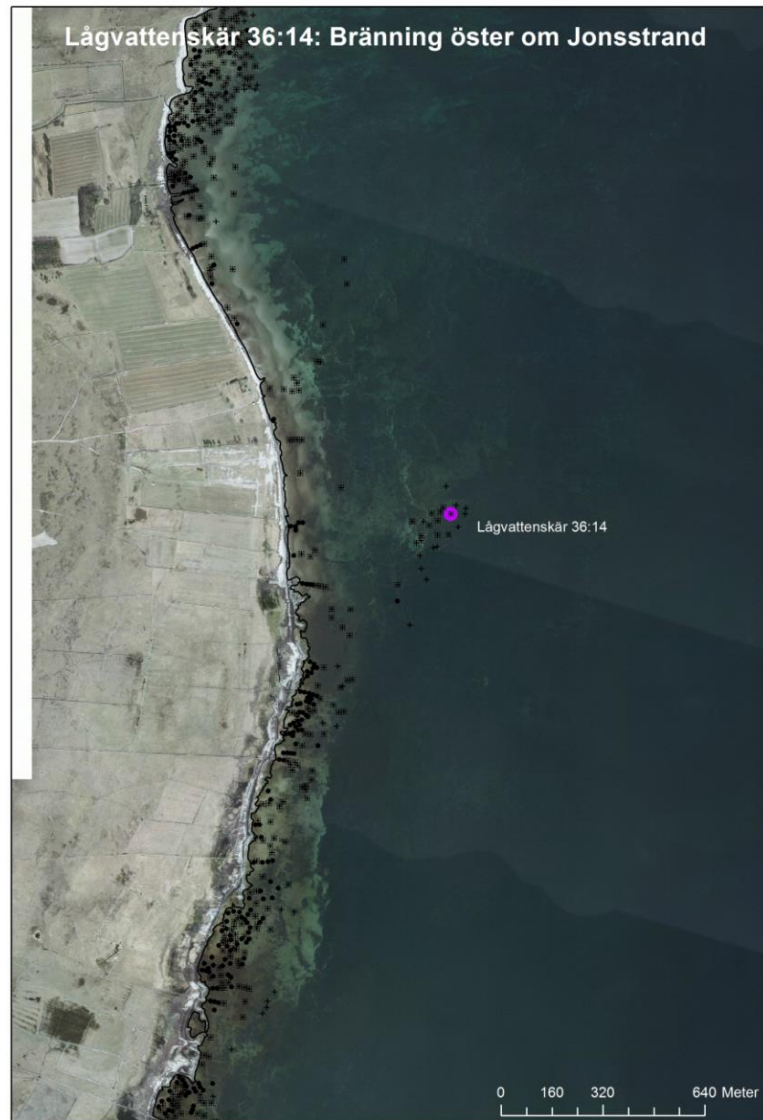


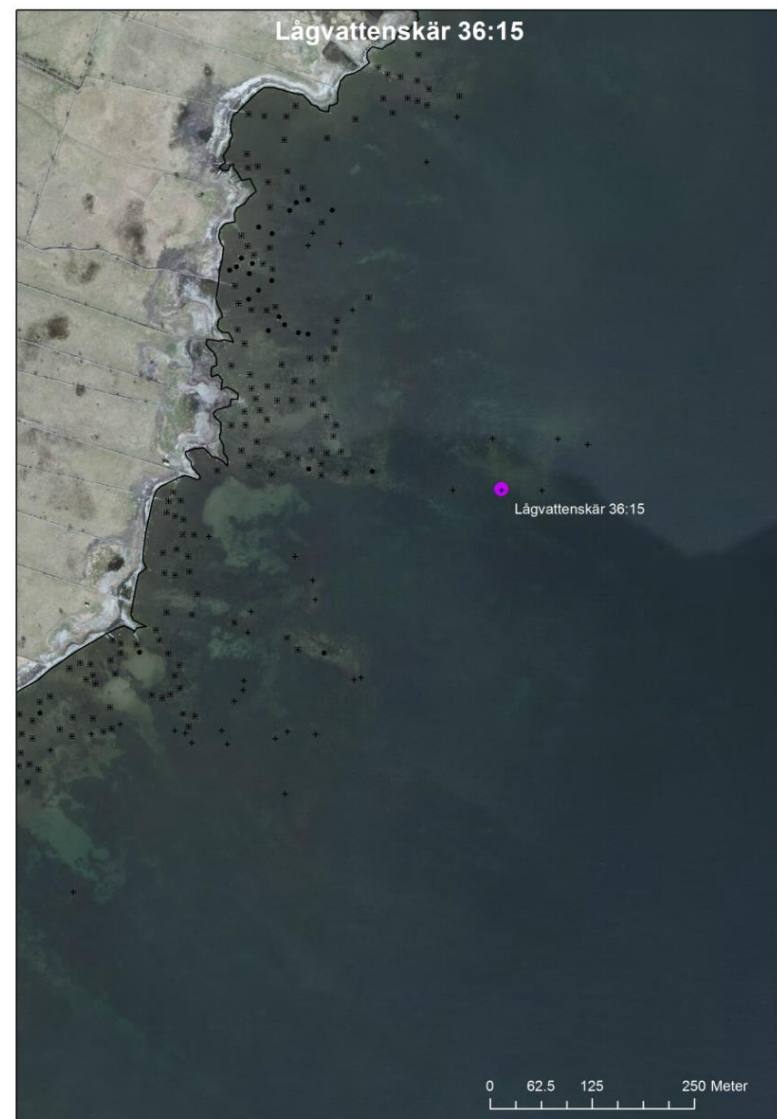
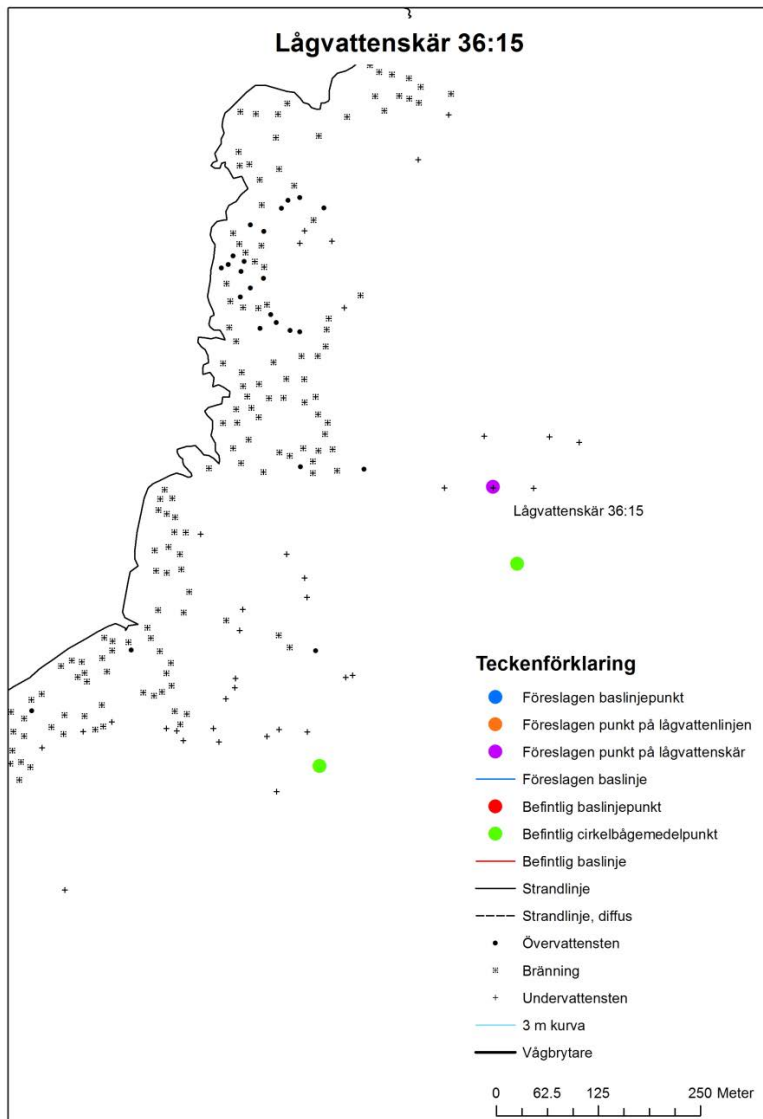


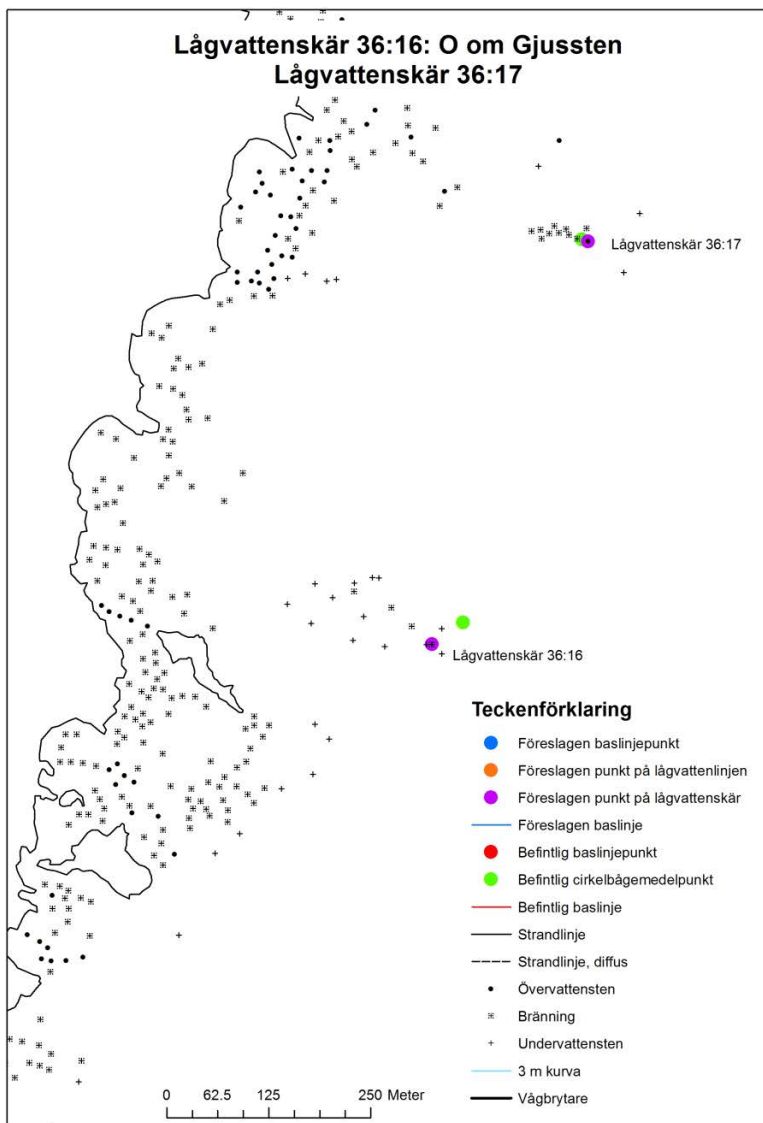
Lågvattnenskar 36:14: Bränning öster om Jonsstrand

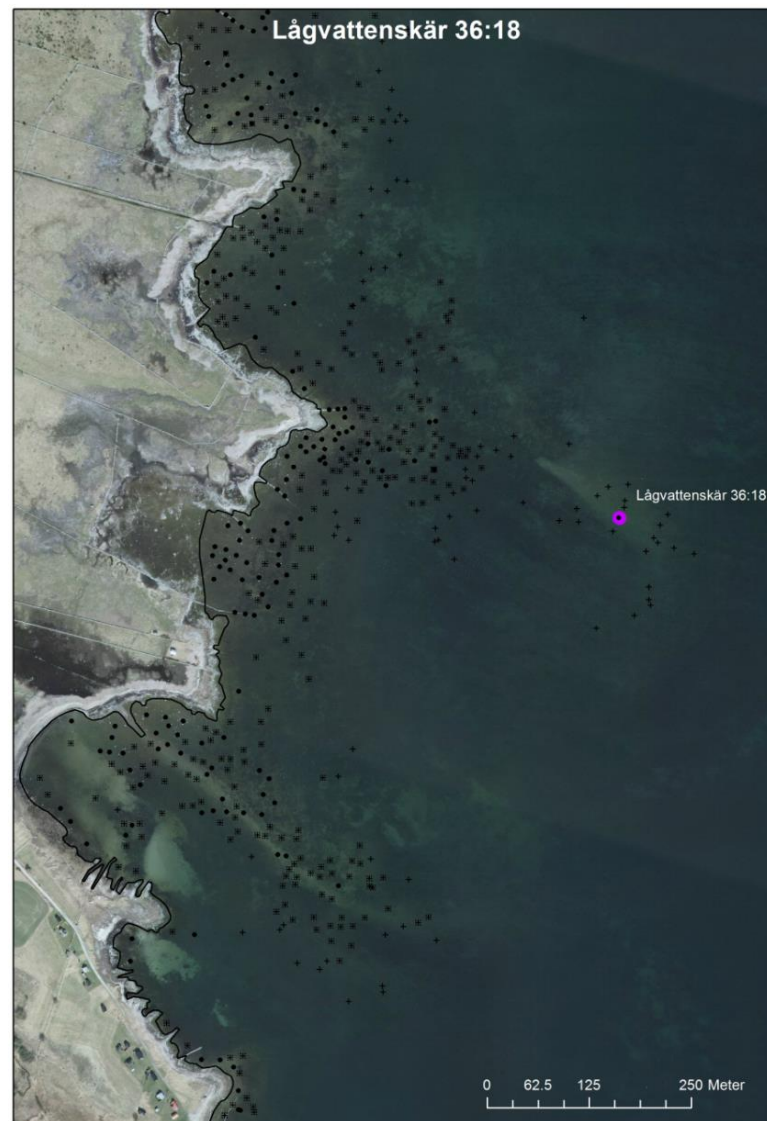
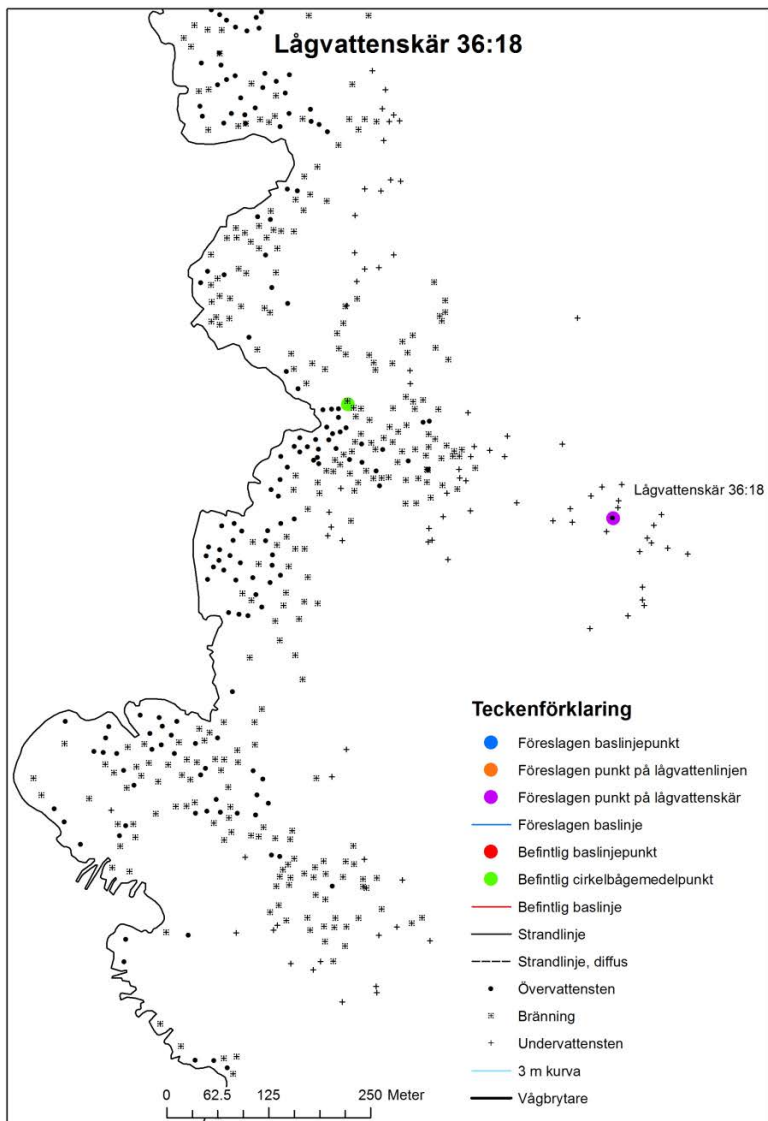


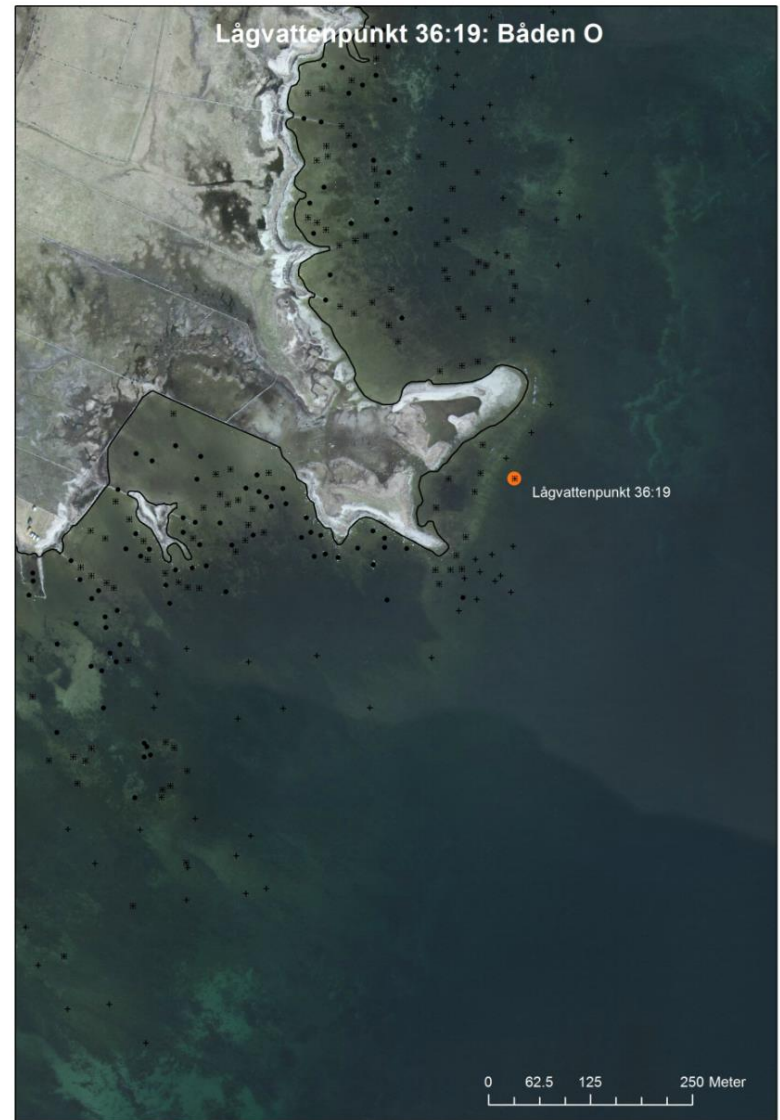
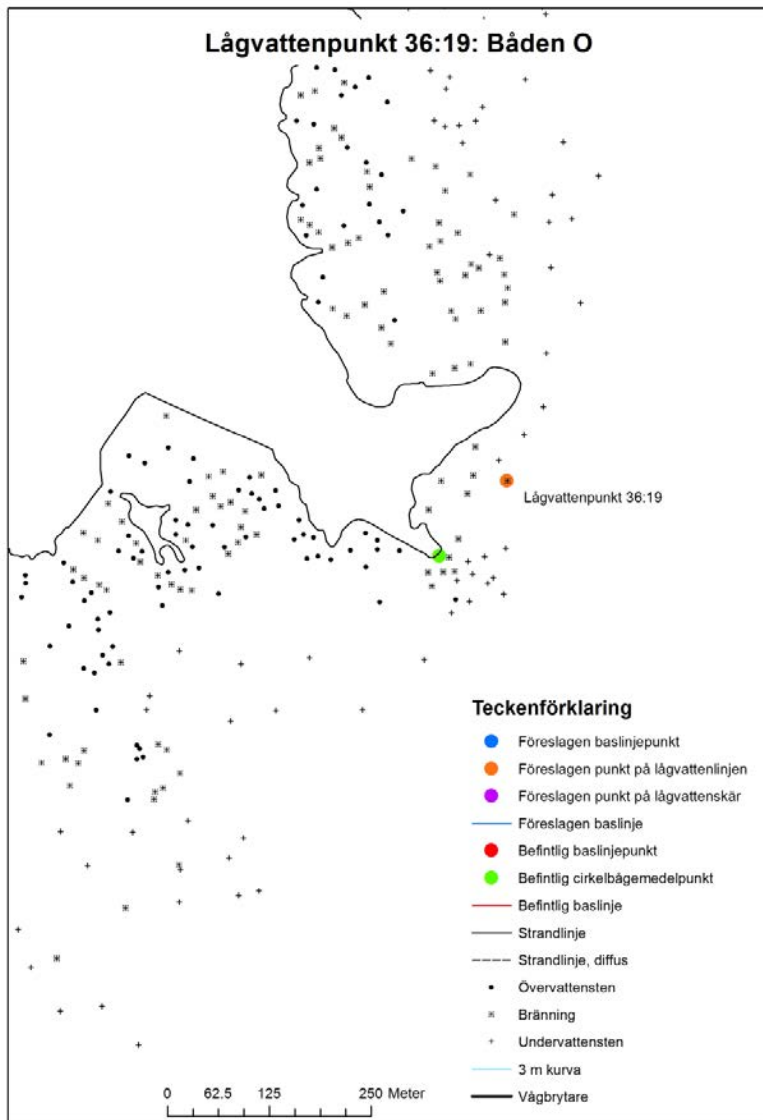
Lågvattnenskar 36:14: Bränning öster om Jonsstrand

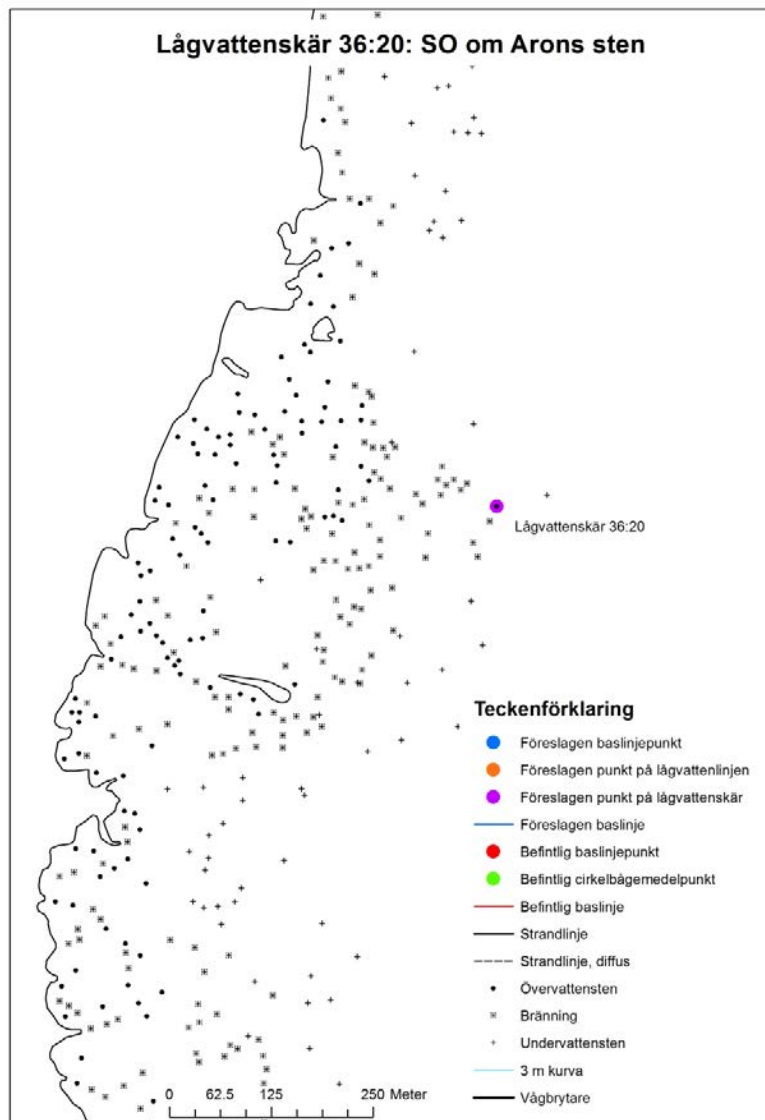


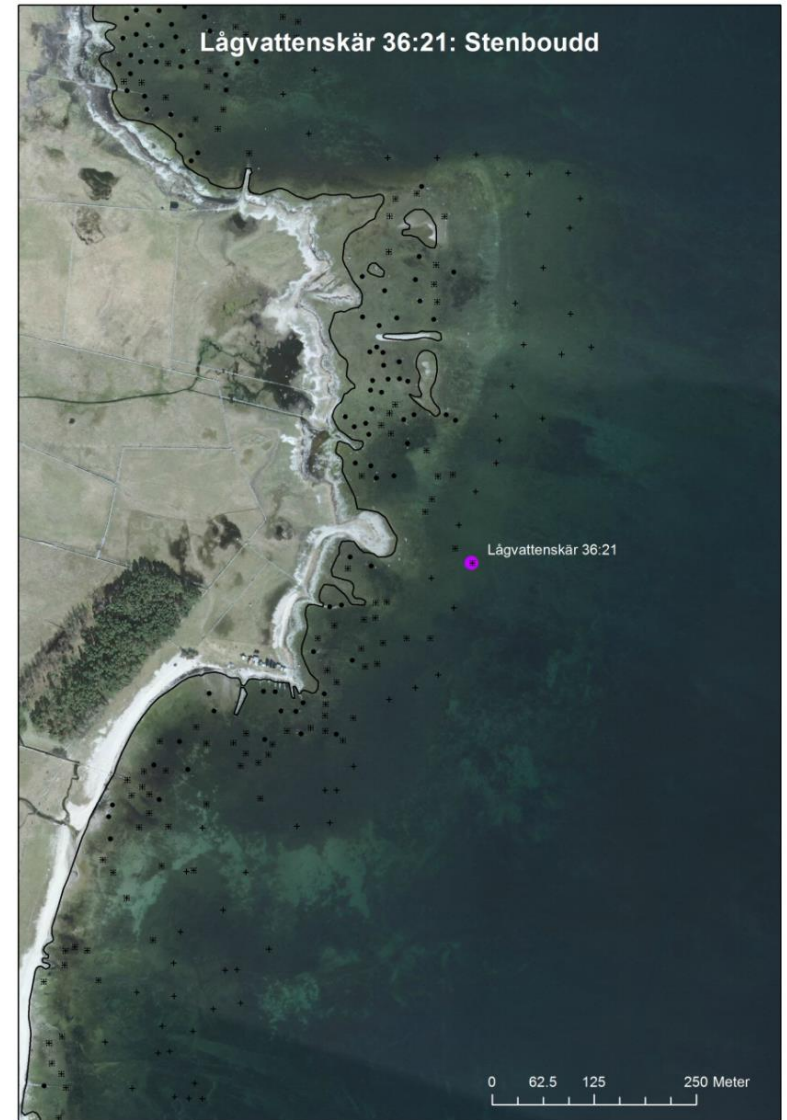
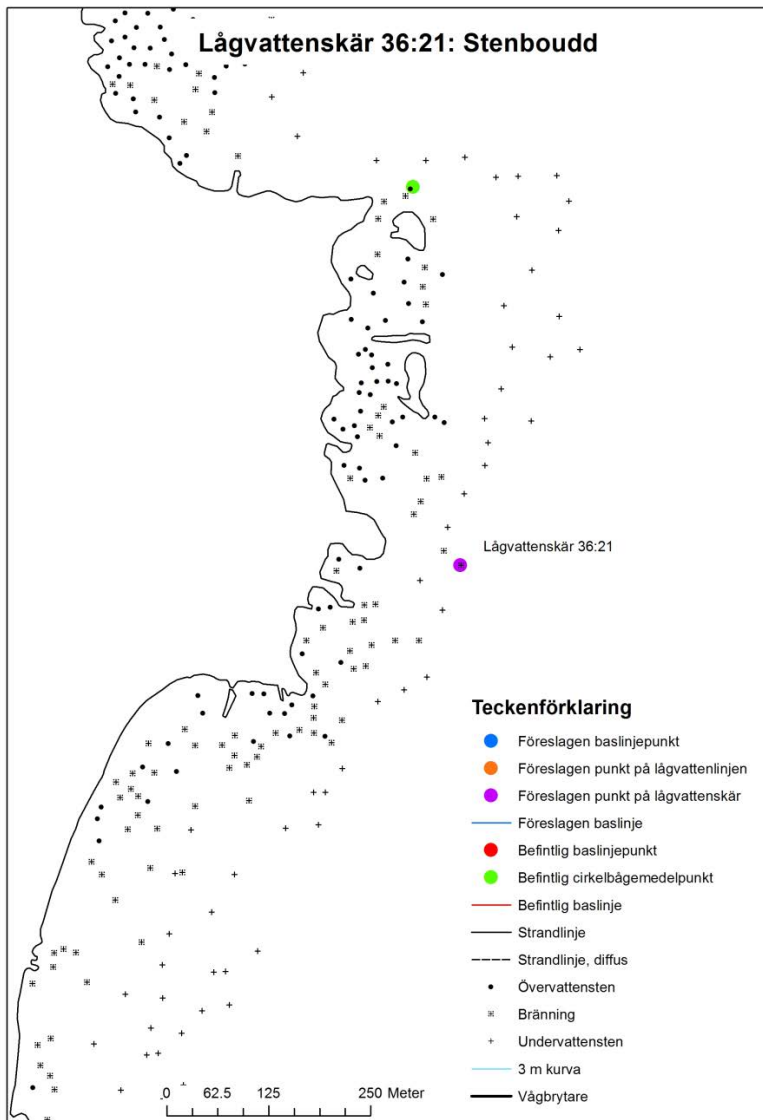


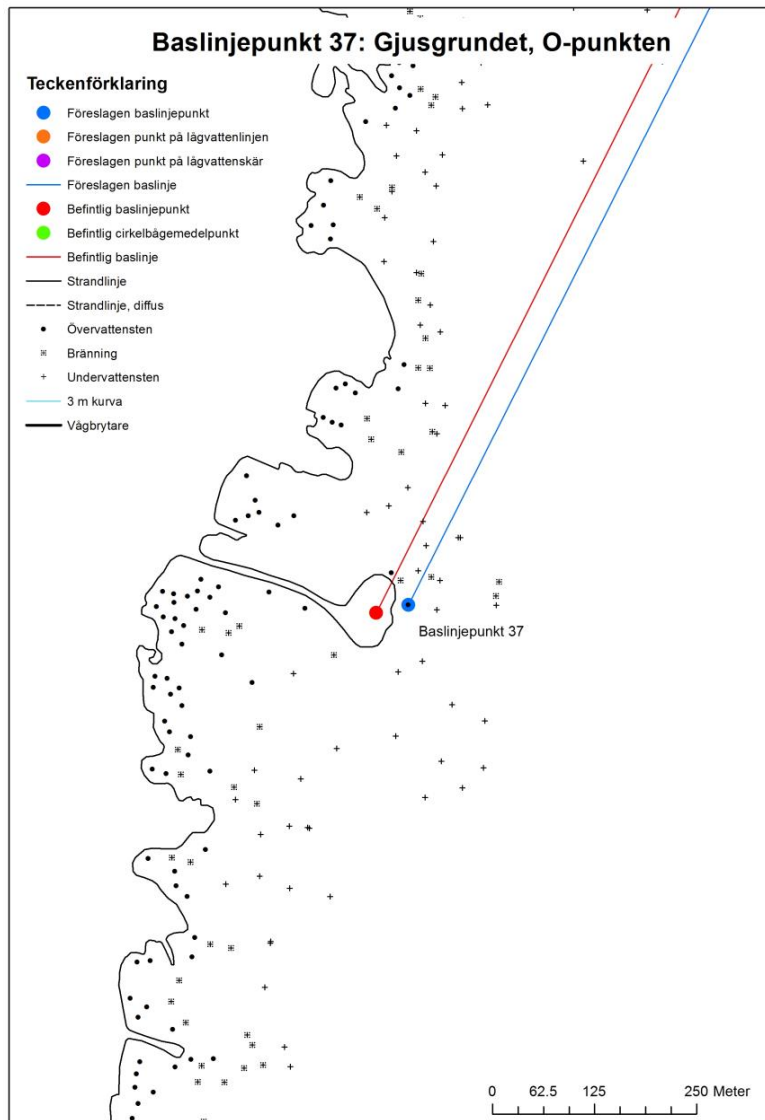


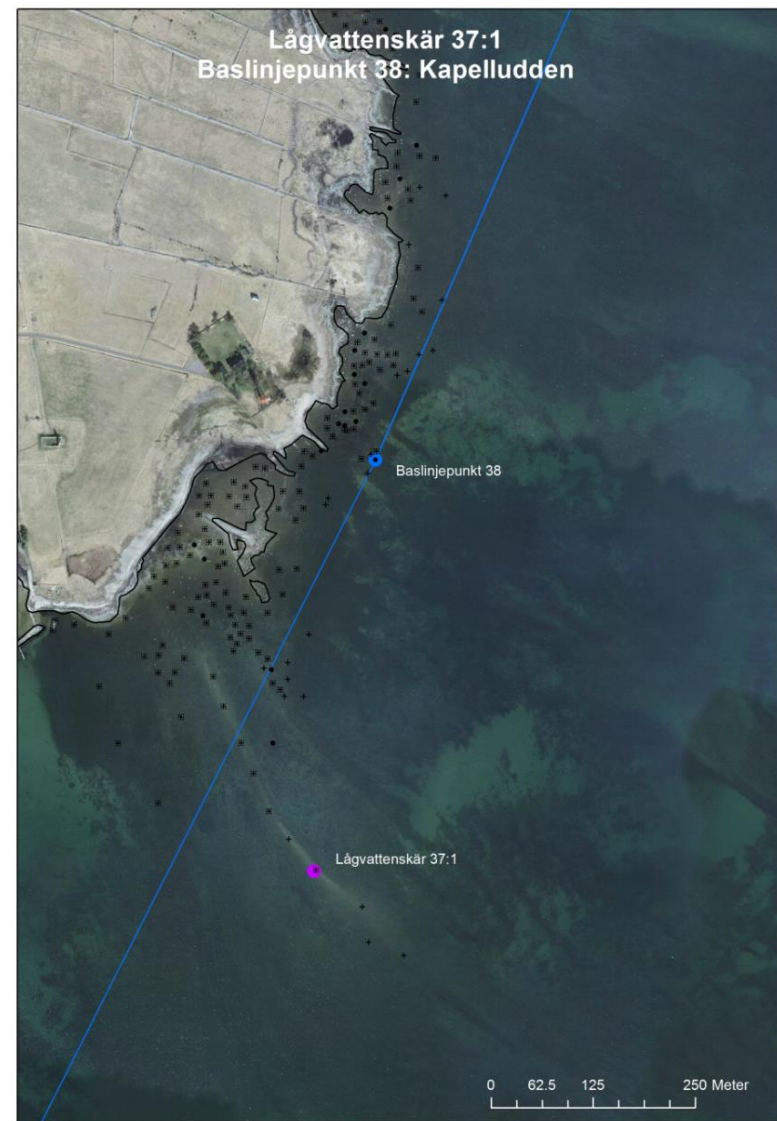
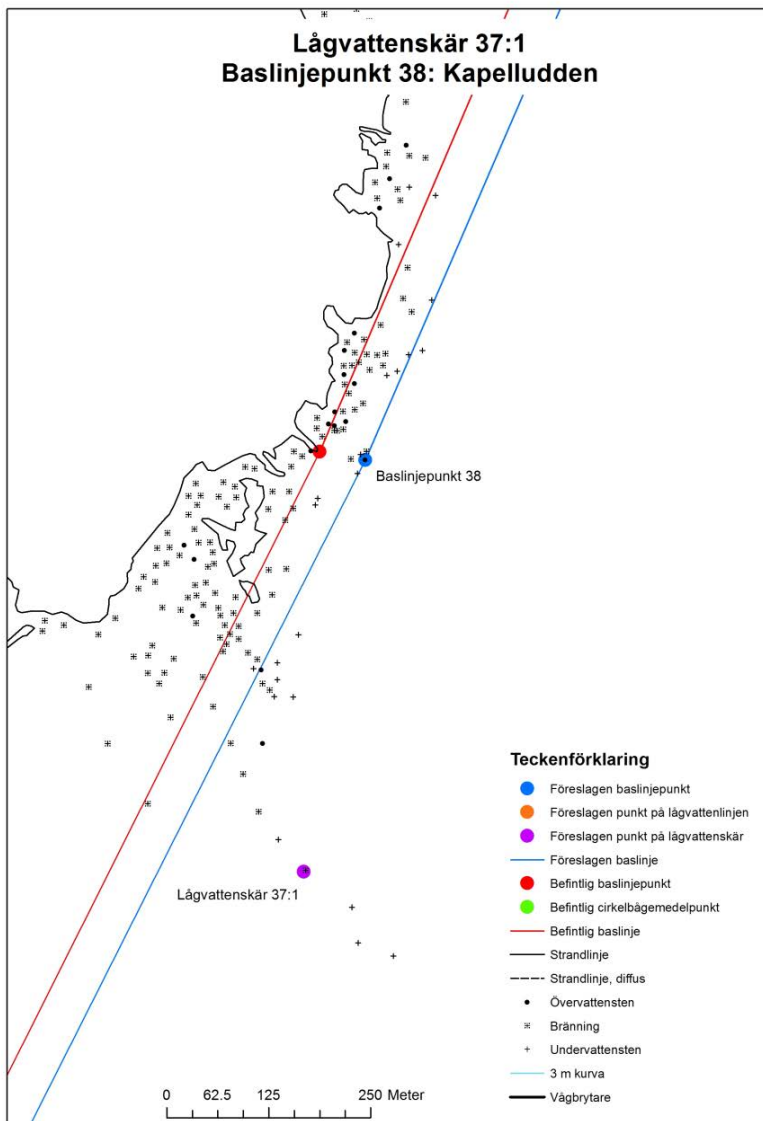


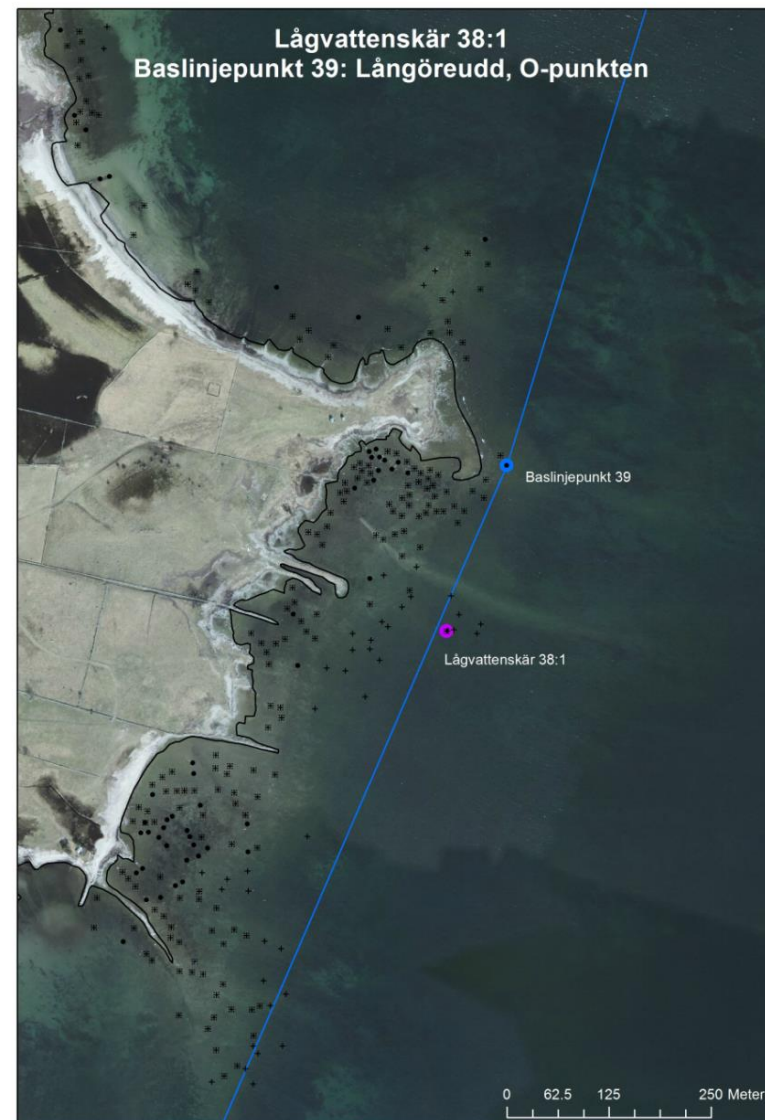
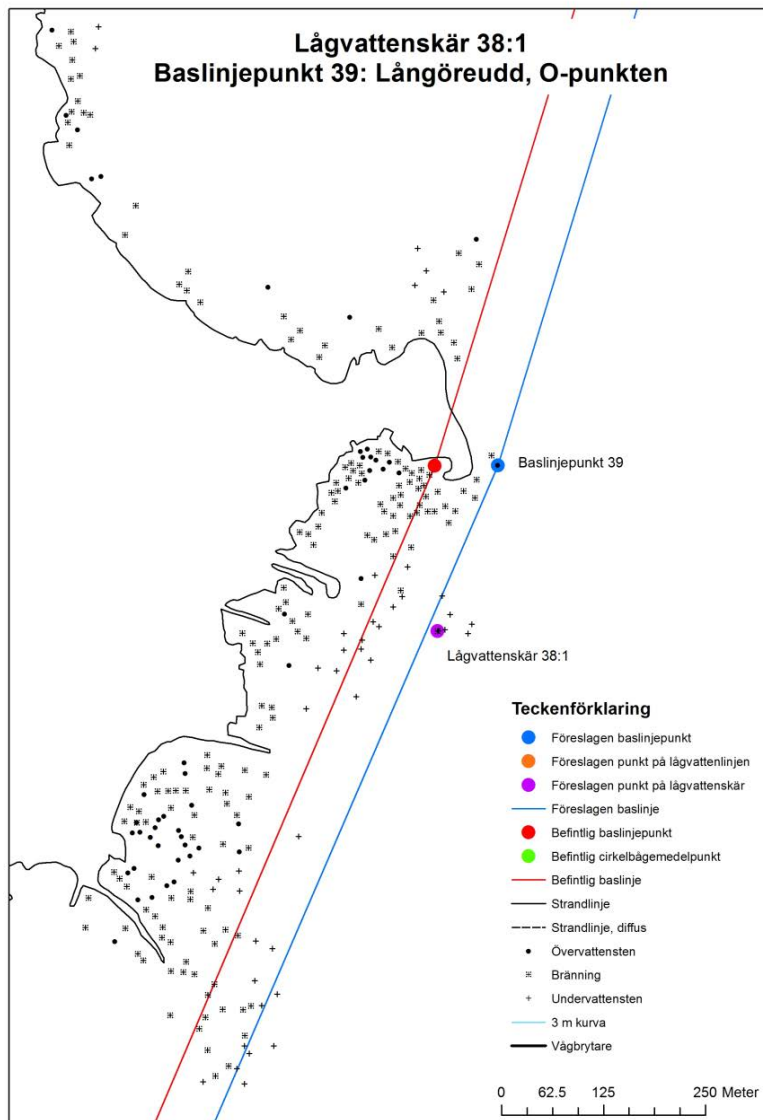


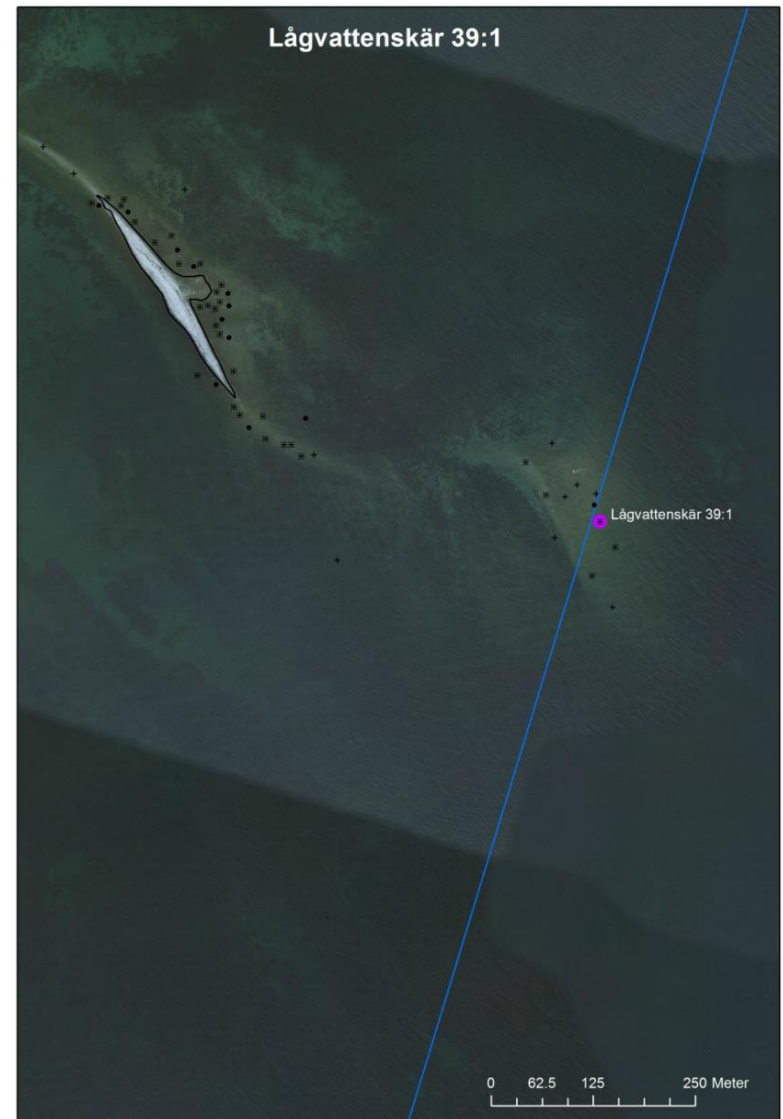
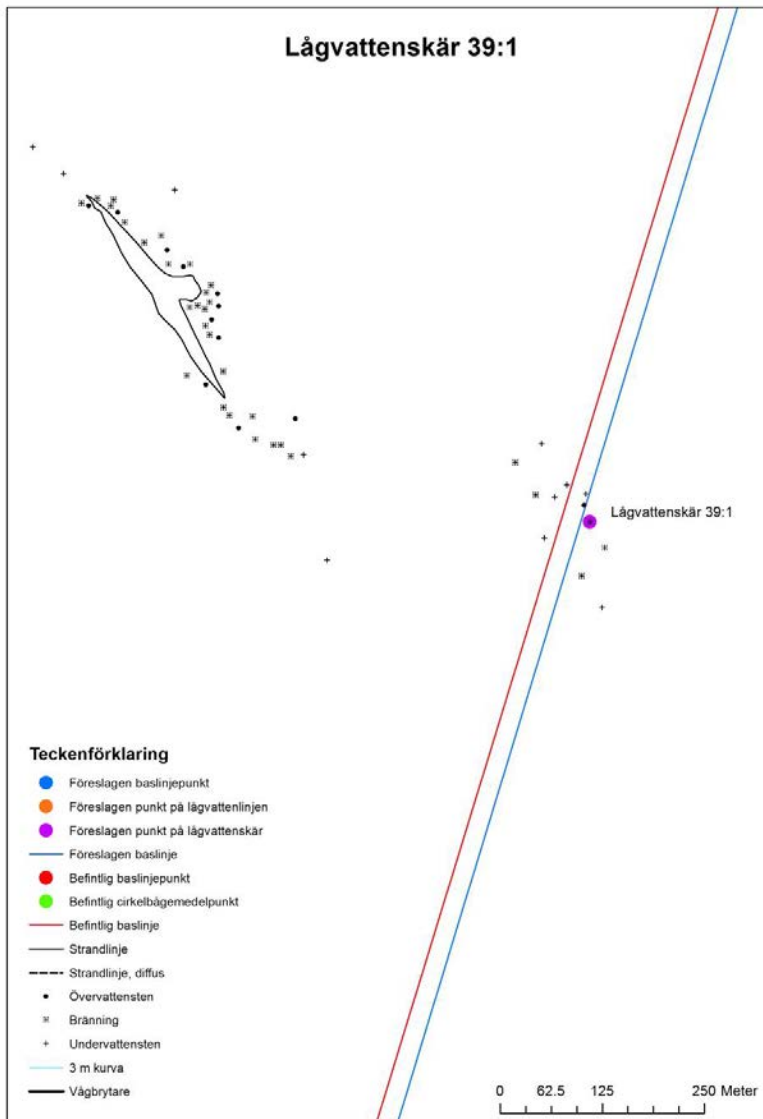




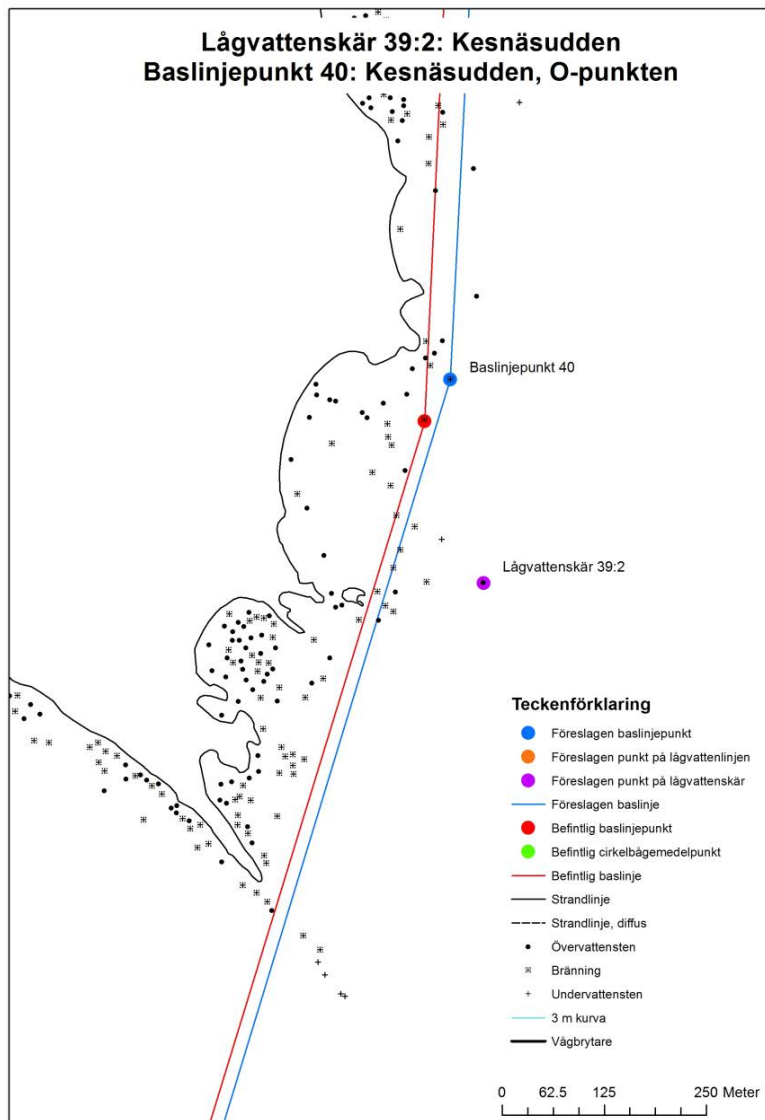




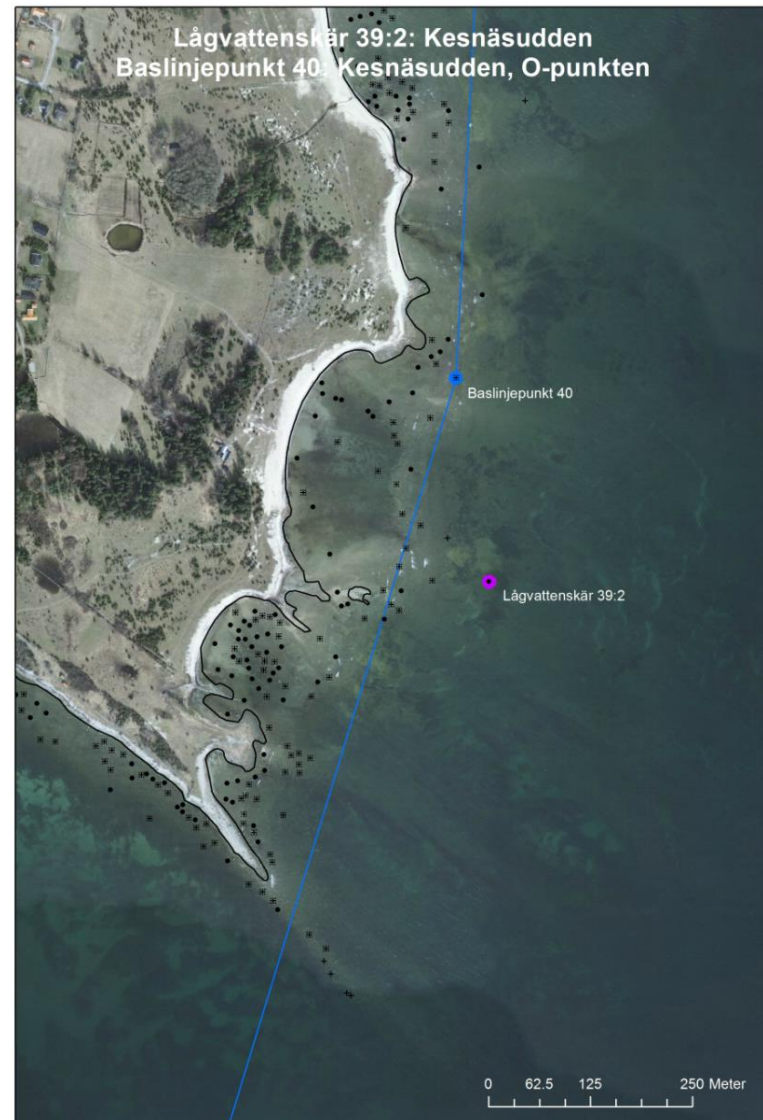




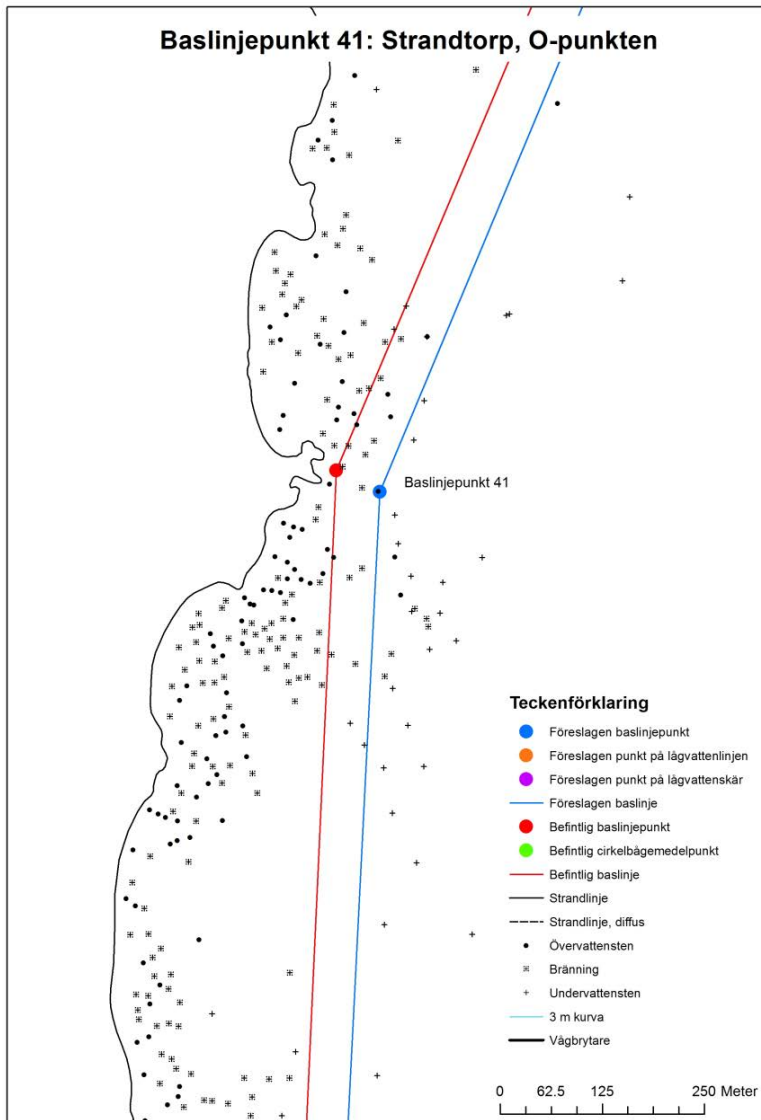
Lågvattenskär 39:2: Kesnäsudden
 Baslinjepunkt 40: Kesnäsudden, O-punkten



Lågvattenskär 39:2: Kesnäsudden
 Baslinjepunkt 40: Kesnäsudden, O-punkten



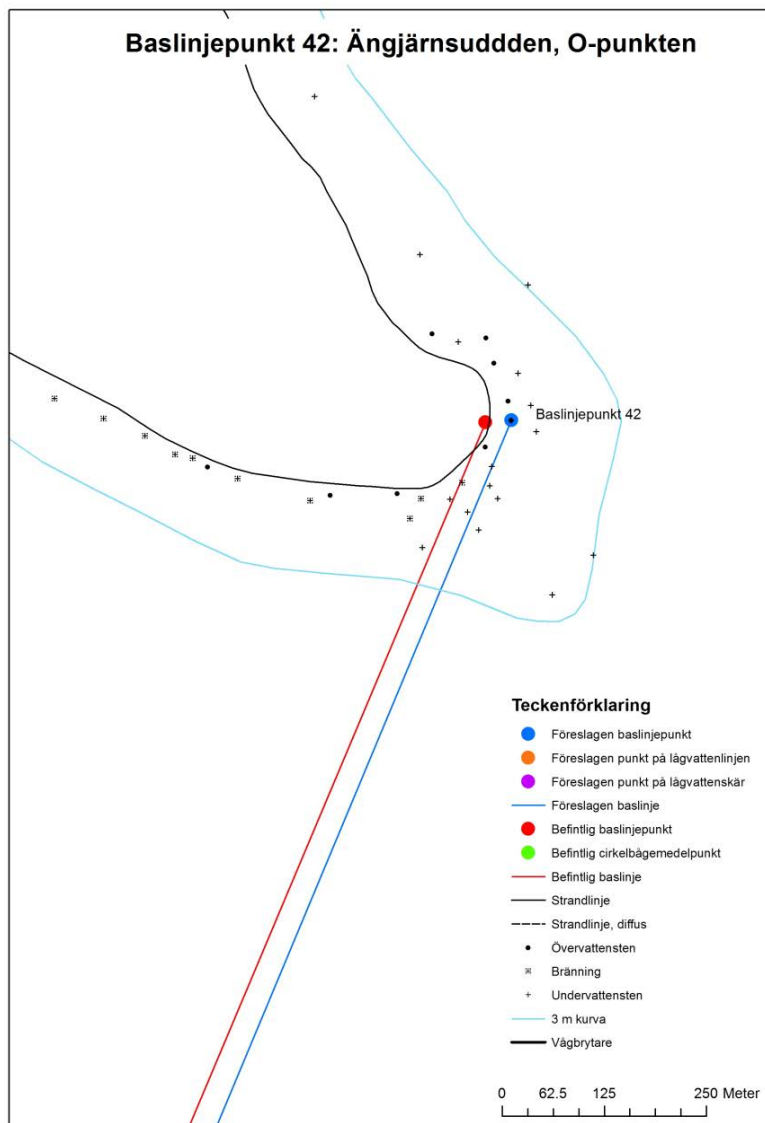
Baslinjepunkt 41: Strandtorp, O-punkten



Baslinjepunkt 41: Strandtorp, O-punkten



Baslinjepunkt 42: Ängjärnsudden, O-punkten



Baslinjepunkt 42: Ängjärnsudden, O-punkten

